

# Massachusetts Butterflies



**Spring 2006, No. 26**

*Massachusetts Butterflies No. 26, Spring 2006*  
© Copyright 2006 Massachusetts Butterfly Club. All rights reserved.

1

*Massachusetts Butterflies* is the semiannual publication of the Massachusetts Butterfly Club, a chapter of the North American Butterfly Association. Membership in NABA-MBC brings you *American Butterflies*, *Massachusetts Butterflies*, *Butterfly Gardener*, and all of the benefits of the association and club, including field trips and meetings. Regular dues are \$30 for an individual, \$40 for a family, and \$60 outside the United States. Send a check made out to NABA to: NABA, 4 Delaware Road, Morristown, NJ 07960.

### **Officers of the Massachusetts Butterfly Club**

*President:* Carl Kamp  
Box 111  
Royalston, MA 01368  
(978) 249-9675  
[carlkamp@lightband.com](mailto:carlkamp@lightband.com)

*Treasurer:* Lyn Lovell  
198 Purchase St.  
Milford, MA 01757  
(508) 473-7327  
[jllovel@naisp.net](mailto:jllovel@naisp.net)

*Vice President-East:*  
Dolores Price  
92 Samuel Drive.  
North Grafton, MA 01536  
(508) 839-2299  
[dprice@BeckerCollege.edu](mailto:dprice@BeckerCollege.edu)

*Vice-President-West:*  
Barbara Walker  
33 Woodland Road  
Auburn, MA 01501  
(508) 754-8819  
[barbara.walker@umassmed.edu](mailto:barbara.walker@umassmed.edu)

*Membership Secretary:* Nancy Young, 698B Heritage Village, Southbury, CT  
06488 (203) 264-9202

*Recording Secretary:* Wendy Miller, 508 Edgebrook Drive, Boylston, MA  
01505 (508) 869-6039

### **Massachusetts Butterflies Staff**

*Editor:* Sharon Stichter 108 Walden St., Cambridge, MA 02140  
[sharonstichter2@comcast.net](mailto:sharonstichter2@comcast.net)

*Records Compiler:* Erik Nielsen 47 Pond Plain Rd., Westwood, MA 02090  
(781) 762-7708 [erik@massbutterflies.org](mailto:erik@massbutterflies.org)

*Webmaster:* Dale Rhoda 330 Blandford Drive, Worthington, OH 43085  
(614) 430-0513 [daler@alumni.duke.edu](mailto:daler@alumni.duke.edu)  
[www.massbutterflies.org](http://www.massbutterflies.org)

## CONTENTS

- 2 Night into Day: Moths by Daylight  
Joe Choiniere
- 12 2005 Season Summary and Records  
Erik Nielsen
- 34 Migrant Nymphalids in Essex County, 2004-5  
Sharon Stichter
- 46 *Trip Reports*  
Colorado Butterflies, July 9-17, 2005  
Steve Moore
- 55 *Reviews*  
*The Millennium Atlas of Butterflies  
in Britain and Ireland*  
Dottie Case
- 59 *Short Reports*  
From Wasteland to Butterfly Meadow

*Cover photo: Early Hairstreak (Erora laeta), by Erik Nielsen  
Mt. Greylock, MA, June 5, 2005*

## Night into Day: Moths by Daylight

By Joe Choiniere

It's high summer and meadows are bulging with colorful life. Common milkweed is in bloom; large jumping spiders have reached adult size and spiral among milkweed leaves, and spotted milkweed beetles sit riotous in their black-dotted orange warning garb. A purplish brown, quick flying, Pearl Crescent-sized *moth* of some type flushes wherever one walks in search of hairstreaks, fritillaries, and the first Viceroy.

“What moth *was* that?!” Lately, butterfly enthusiasts are ignoring this type of moth encounter less and less, and asking this question more and more.

There is a reason for the casual way in which experienced “butterfliers” easily identify flying objects in meadows as moths--- these naturalists already recognize the hundred or so butterfly species in our area, and anything else similar is automatically a moth! This “its-not-a-butterfly” technique works better in the field than looking at the scientific differences between these very similar groups, butterflies and moths; antennae, wing connections, body “hair,” and other differences are hard to observe at a distance.

One oft-stated distinction, that butterflies are active by day and moths by night, is incorrect. Over 90% of our combined butterfly and moth species are moths, and, indeed, over 90% of our moths do fly by night, but the 100 or more other moth species active by day can double your fun in the field. Moths do own the night, but they also share the day, and some seem to never go to bed!

Moth hunting by day can augment your daily butterfly sightings and add another layer to the study and enjoyment of nature. Moths are not as difficult to identify as you might think, especially if you have already polished your recognition skills with details of butterflies. Moths might even save your trip when butterflies are lacking!

Moths greatly outnumber butterflies within the insect order *Lepidoptera*, which has about 120,000 species worldwide. Generally ten to fifteen times as many moth species as butterflies inhabit a given area; this high diversity is exaggerated by the abundances of moths, which often exceed the spectacular flights we see with a few butterflies like European Skippers and American Coppers. One day in late July of 2001 I saw what I eventually identified as a deltoid noctuid moth, likely **Early Zanclognatha** (*Zanclognatha cruralis*), flying in every wooded area of Wachusett Meadow Wildlife Sanctuary where I work; this genus has larvae which, according to Covell, [see Sources list below] eat dead leaves. (My brand new Caterpillars of Eastern North America by David L. Wagner, a superb book, indicates that the youngest larvae may feed in the foliage, then drop with the leaves.) The skittish adults alighted on leaf litter and were easily recognized with binoculars to their subfamily by their “deltoid” (equilateral triangle) wing silhouette at rest and their prominent “snouts” (these are palpi as with the Snout butterfly.) Three to four moths per square meter extrapolated to the 380 hectares of forest on the sanctuary indicated a flight that day of around 11 million individuals! I could only count to about 250.

If it is indeed a process of elimination that makes us all so good at telling a moth from a butterfly in the field, what characteristics do moths possess that so instantly rule them out as potential butterflies? Size is one; our smallest butterflies are still bigger

than most day flying moths, which can range down to a half-inch wingspan. *Small flying things are likely moths.* And, how about all those white species? Charles Covell's [A Field Guide to the Moths of Eastern North America](#) devotes a whole plate and parts of others to white moths---what I call the white pages. Our Massachusetts white butterflies include the ubiquitous (and rather large by moth standards) Cabbage White and the rarer whites. White moths range from the day and night flying **White Spring Moth** (*Lomographa vestaliata*), to fly-when-disturbed species which rest cryptically by day on leaves like the **Large Lace Border** (*Scopula limboundata*), a splattered bird dropping look-alike. *Small white flying things are likely moths.* Many moths have neutral colors and earth tones: browns, ochres, umbers, grays approached in butterfly somberness only by the satyrs, wood nymphs and those skipper witches. *Small and dull flying things are often moths.*

Generalizations these are, but there are more. Flight style often seems a dead give away: “got to be a moth... look at that crazy flight!” is a common expression of butterfly folks. Many day moths do exhibit fluttery, sputtery, “shot out of a cannon” flight. Certainly Pearl Crescents approach this moth flight characteristic, but close by in the same meadow lurks the **Clover Looper Moth** (*Caenurgina crassiuscula*) (the purplish brown species mentioned in the first paragraph) which add sudden drop stops to their wahoo, skittering flights when disturbed, making them exasperating to relocate before they spook again.

While it is true that some of our day flying moth species fly only when spooked (a categorization one might equally apply to some of the hairstreaks), and are simply resting in a habitat butterfly enthusiasts frequent, a good number of moths nectar on flowers by day, alongside butterflies, moving from blossom to blossom. The

**Hummingbird Moth** (Clearwing) (*Hemaris diffinis*) is a readily noticed day flying moth, often mistaken for a bird, not a butterfly. But other day flying moths can be dead-on look-alikes for butterflies. I'll never forget the specimen of a **Spear-marked Black** (*Rheumaptera hastata*) I once turned in to the Mass Audubon butterfly atlas as an unknown butterfly, which was graciously returned to me as a moth. It's thin body, broad wings, daytime flight and wing posture fooled me. Nectaring on blueberry flowers completed the ruse, and it took forever to catch!

Even though they may not be nectaring with their relatives, the “freak out and fly” species are worth mentioning for their abundance and “encounterability,” leaving the argument over what constitutes a true day flying moth's behavior for experts. (Most moth experts will not “allow” the spook and fly species to truly be considered day flying moths. Here I have decided to describe those moths encountered often in the daytime, ignoring whether they qualify as true day moths.) If you can't yet ID those pesky moths to species, why not try to find and study one day moth species for every butterfly you see? Write down a few notes: white, slightly smaller than an azure, wings have angles on outer margins, body thin like a butterfly's, antenna butterfly-like, folds wings together over back at rest. Give it your own name: white spring moth-good choice! Grab a copy of Covell's book and check out the white pages. Go back for more information, or forget about it---until you see it again next year. “Hey that's the little white moth I saw in the same place at the same time last year!”

One of the earliest day flying moths of the year, sometimes on wing even in late March, catches me at that unfair advantage; I'm rusty on moth identification after a long winter.. Sallows and pinions fly at dusk on warm nights, but there is little colorful sunlit flight as yet. Thus it is that the first orangey brown critter that I

attempt to chase down in the birches on Brown Hill every year turns out not to be the new elfin species I had hoped for, but rather **The Infant** (*Archaeris infans*), which is a geometrid moth from a subfamily thought to be more northern in distribution. This is an interesting reversal in that many of our day flying moth species are meager representatives of larger southern diversity groups. Infant front wings have skipper-like white broken bands and hindwings have orange; the overall look is like an enlarged Broad-winged Skipper.

Geometrid moths, the so-called inchworm moths, are the most butterfly-like of the moth families in our area. Their generally thin bodies with broad front and hind wings, coupled in some of the species with bright colors and patterns and day flight, can be quite deceptive; in addition, many yellow night flying species have butterfly-like directed rather than random flight. The **Bluish Spring Moth** (*Lomographa semiclarata*) which flies in May may be the most tricky, since it is very similar in size and color to a dark form Spring Azure. Look again! Two others in this genus, the **White Spring Moth** mentioned earlier, and the **Gray Spring Moth** (*Lomographa glomerari*), an April flier, are also butterfly-like and come to lights as well as fly by day.

Early May brings my favorite flower, common lilac. The giant clumps of these shrubs which decorate colonial homes' grounds can be magnets for nectaring insects, often attracting Red Admirals among the bees by day and sphinx or hawk moths by dusk. The Hummingbird Moth mentioned earlier is a sphinx, but others in this family nectar as well. **Abbott's Sphinx**, (*Sphecodina abbottii*) is a treat, the gyroscopic rapidly vibrating yellowish hindwings and thick body blending it into the day's last big bumblebees among the fragrant tubular flowers. Many other sphinx feed on flowers, nectaring at dusk on many shrubs and garden flowers into summer.



**The Nessus Sphinx** (*Amphion floridensis*) has two yellow bands on a dark abdomen, another bumblebee double that flies later in summer.

No day moth article is complete without a mention of the white spotted black species, which have a popular color combination. The most abundant of this artificial group, *Anania funebris glomeralis*, has no common name but is widely known as the “**A.F.G.**,” perhaps from John Himmelmann’s book Discovering Moths. This is a small moth but superficially almost identical in pattern to the much larger **Eight-spotted Forester** (*Alypia octomaculata*). **AFG**’s fly in meadows mid-June to mid-July and turn up on 4<sup>th</sup> of July counts often. At Wachusett Meadow Wildlife Sanctuary in Princeton, **Eight-spotted Foresters** are flying in mid to late June and hang around the enormous ancient grape vine, where we find larvae in August. The other spotted species, while similar in pattern, are quite different in shape. The **Grape Leaf folder Moth**, (*Desmia funeralis*) (see photo below) has elongated front wings with two white spots, but only a single on the hind wing; the **Spotted Thyris** (*Thyris maculate*) and **Mournful Thyris** (*Thyris sepulchralis*) are small, with narrower wings than **AFG**’s. These spotted species flash an attention-grabbing pattern when they fly; the occurrence of this pattern across multiple moth families must have an interesting rationale.

By high summer, the afore-mentioned milkweed plants are worth checking at and near dusk, as their flower nectar attracts moths as well as butterflies. The fragrance of the plant seems to increase as the day ages. I am always excited to find the **Isabella Tiger Moth** (*Pyrrarctia isabella*), the adult form of the widely known “woolly bear caterpillars” nectaring quietly in the blossoms at dusk and just after dark. This is just reward for all those woolly-bears we saved from roadways last October as they marched in search of wintering

places. Tiger moths are members of the Arctiid family which includes many day fliers; another species with an interesting caterpillar is the **Milkweed Tussock Moth** (*Euchaetes egle*). The fairly non-descript adult often nectars at milkweed flowers as well as laying its eggs on the plant. After finding the adults early on, summer can't officially end without also finding, later when you're counting Monarch larvae, the stunning tufted and hairy black, orange and white tiger-ish larvae, which often group together and wiggle in unison when disturbed.

Late summer brings goldenrod bloom. Nectaring Monarchs always distract me from smaller treasures hidden on and in the flowers, treasures from all orders of insects. Here fly the Sesiid family, wasp look-alike moths extraordinaire. You may be looking at these exceptional mimics of yellow jackets, hornets, and other bees and wasps on goldenrod all the time without knowing it. Look for the long and moth-like antennae and the darker wings, either clear and bordered with dark or completely dark. Last year I saw more Sesiids than ever before, as I obtained two pheromone baited sticky traps for organic control of the **Peachtree Borer Moth** (*Synanthedon exitiosa*), a sesiid moth with a "pest" larva of peach trees. The label did indicate the product would also attract other moth borer species, including **Squash Vine Borer Moth** (*Melittia cucurbitae*) and **Lilac Borer Moth** (*Podosesia syringae*), also sesiids with wasp mimic adults. Yet I was amazed at the attraction of so many specimens of so many species, sadly rendered unidentifiable by the sticky trap. I removed the pheromone lure and tried it "sans gum," but a bit too late in season. The moths were too beautiful to collect anyway (except for the Peachtree Borers). Best year for peaches so far, as well. Next year I will use the lure without the goo and see just how sesiid many borer moths I can find.

Canoeists may see moths darting to and fro close to lily pads in huge numbers. A glance across the pond's expanse will often show the little moths everywhere, flying where not spooked, day fliers en masse, tiny micro moths such as *Munroessa gyralis*, the one of several I've identified so far. A quick review of their life cycle brings one into the realm of niche and how moths have taken advantage of almost every available habitat and life style. *Munroessa* larvae are semi-aquatic, feeding in and under water on lily pads as miners and borers. There are many more "micros" that fly by day, too small and obscure to concern beginners.

In early fall, habitats other than meadows may produce interesting moths. Forests have their share of moth encounters including the aforementioned *Zanclognatha*. Other species of deltoid noctuids fly as well. I have encountered *Besma* (see below) and in September the underwing moths, prize of the night. These may be active only if their cryptic cover---from bark to bird droppings to dead and diseased leaves---is blown. And lastly, unless I count the occasional early November **Fall Cankerworm** (*Alsophila pometaria*) outbreak, are the **Buck Moths** (*Hemileuca maia*), big day fliers that take off like rockets in open oak forests or scrub oak barrens into October. Their white median bands are distinctive, but the thick bodies and feathery antennae instantly indicate moth.

I claim no expertise in moth identification, only a high degree of interest, appreciation, and acceptance that I will never completely know this abundant and diverse group. There is a great chapter on day moths in Himmelman's motivating moth book; Covell usually mentions if species are day fliers; and Holland's older The Moth Book mentions a few. I have tried to include some species not mentioned by these moth experts. I hope that my observations will inspire you to discover your own calendar of daytime moth

spectacles each field season and bring you to your own discoveries, mysteries, and solutions.

This year I seek to repeat a delightful experience, the flight of **Straw Besma**, (*Besma endropiaria*) in old growth sugar maple forests at Wachusett Mountain. The delicate dead-leaf pattern of these geometrids, their feathery antennae, their transparency of wings which allows green foliage to leak through, and the tendency to roost in the open and flush together like a gentle snowfall of big flakes made my first encounter with this species memorable. Oh, and by the way, if you run out of day moths, leave the porch light on!

*Joe Choiniere is an amateur moth enthusiast who has worked at Mass Audubon's Wachusett Meadow Wildlife Sanctuary in Princeton for over 20 years. Among other projects, he is compiling, with the guidance of many experts, a full biodiversity inventory for the 1,200 acre property, which so far lists about 2,000 total species, including spiders, butterflies, moths, odonates, birds, mammals, herps, vascular plants, and fungi. You can contact him at [jchoiniere@massaudubon.org](mailto:jchoiniere@massaudubon.org) for more information or to help with the inventory, and with comments, corrections or feedback.*

## Sources on Moths

Covell, Charles V. Jr.. *A Field Guide to Moths of Eastern North America*. Virginia Museum of Natural History. Republished 2005 from the 1984 Houghton Mifflin Peterson Field Guides original, with some updating. List Price: \$40; from about \$26.00 from online retailers. Still the most comprehensive reference available.

Himmelman, John. *Discovering Moths: Nighttime Jewels in your Own Backyard*. Camden, ME: Downeast Books, 2002.

Holland, W. J. *The Moth Book*. N.Y.: Dover Publications, Inc. 1968. Originally published 1903.

Mitchell, R.T. and Zim, H.S. *A Golden Guide: Butterflies and Moths*. N.Y.: Golden Press, 1987.

Wagner, David L. *Caterpillars of Eastern North America*. N.J.: Princeton University Press, 2005.

[www.npwrc.usgs.gov/resource/distr/lepid/moths/mothsusa.htm](http://www.npwrc.usgs.gov/resource/distr/lepid/moths/mothsusa.htm)



Grape Leafroller *Desmia funeralis*  
J. Choiniere, Wachusett Meadow Wildlife Sanctuary, June 29, 2004

*Massachusetts Butterflies No. 26, Spring 2006*

© Copyright 2006 Massachusetts Butterfly Club. All rights reserved.

## 2005 Season Summary and Records

By Erik Nielsen

The number of species reported for 2005 was again 103. Thanks to all who submitted their records either directly to me or posted them on the MassLep listserv. There were new high counts for four species, one flew early, and five later than previously recorded.

The average temperature for March was roughly 4.5 degrees F. colder than usual and it continued to snow well past the middle of the month in several sections of the state. All in all it was not exactly the best recipe for a great start to the butterfly season. Still – butterflies were seen. Even though the temperature still didn't make it out of the 40's, the 19<sup>th</sup> of March was a perfectly clear, sunny day. That in combination with very little cloud cover the five previous days was apparently enough to coax the first Mourning Cloak out in the open at the Ipswich River Wildlife Refuge in Topsfield. The second individual for the year was a Milbert's Tortoiseshell in Charlmont on the 22<sup>nd</sup>. By the end of March over 20 individuals of five species had been reported.

Worcester averaged 5.3 degrees F. above normal in April, whereas the immediate coast had more moderate temperatures with Boston being just 1.9 degrees warmer than usual. By the middle of the month Mourning Cloaks, Commas, and Compton Tortoiseshells were seen in good numbers in most parts of the state. Concentrations of these species were especially impressive at Moore State Park in Paxton and at Ipswich River Wildlife Sanctuary in Topsfield. Tom Gagnon and crew saw 33 Mourning Cloaks and 4 Eastern Commas in Moore SP on the 10<sup>th</sup>. On the same day Fred Goodwin tallied 6 Compton Tortoiseshells, 6 Eastern Commas, and 29 Mourning Cloaks at Ipswich River WS.

May turned out to be much colder than normal. For Boston the average temperature was 8.6 degrees below normal and the city received 0.74" more rain than usual. Further inland the conditions were slightly less dire. Worcester averaged "only" 7 degrees colder and actually received less rain than normal. Although drier conditions existed away from the coasts, persistent cloud cover dominated the weather for the month no matter where butterflyers ventured out. In spite of these conditions the month wasn't a complete loss and a total of 46 species were reported. Highlights included 30 Mustard Whites in Lenox on the 19<sup>th</sup>. Participants on a club trip to Myles Standish SF in Plymouth on the 15<sup>th</sup> lucked out with sunny skies, relative warm temperatures, and great looks at four species of elfins: 35 Brown, 9 Hoary, 7 Eastern Pine, and 1 Frosted. On the 28<sup>th</sup> Madeline Champagne counted 62 Frosted Elfins at the colony in Foxborough. Very few observers reported seeing Henry's Elfins in 2005; but six in Fowl Meadows in Milton on the 2<sup>nd</sup> was a nice total. Barbara Volkle and Steve Moore counted 55 Spring Azures at the newly opened Assabet NWR in Stow on the 11<sup>th</sup>, and a club trip to Delaney WMA in Stow on the 29<sup>th</sup> tallied 88 Silvery Blues. On the 29<sup>th</sup> Tom Murray got great looks (but unfortunately no photos) at what he was convinced was a male Persius Duskywing in Myles Standish SF in Plymouth. He reported seeing the fine, raised, white hairs on the front wing and that the white dots at the "wrist" were aligned in a straight line.

June was drier and warmer than usual although only slightly so along the coast. A club trip to Mount Greylock and Moran WMA in Windsor on the 5<sup>th</sup> had great luck with the target species [See Bill Benner's report in *Massachusetts Butterflies* 25, Fall 2005]. On the mountain participants and other butterflyers in the area tallied 29 Tiger Swallowtails, 14 West Virginia Whites, 12 Early Hairstreaks, 18 Azures (of which several were identified as Cherry

Gall), and 5 Pepper and Salt Skippers. At Moran WMA the club found a total of 18 Arctic Skippers. On the 12<sup>th</sup> Renee LaFontaine and Marj Rines found seven Harvesters at the Mystic Lakes colony in Arlington/Medford. On the 3<sup>rd</sup> the total of Frosted Elfins was up to 85 in Foxboro. 164 Silvery Blues was a new high count for the state at Delaney WMA in Stow on the 6<sup>th</sup>. One of the few Variegated Fritillaries for the year, and the only one before September, was found by Bill Benner on the 4<sup>th</sup> in Whately. The state got a new high for Long Dash on the 12<sup>th</sup> when Sharon Stichter counted 200 in Ipswich. Only two Common Roadside-skippers were reported for the entire state in 2005. Both (or maybe the same individual) were in Karen Parker's yard – on the 7<sup>th</sup> and the 13<sup>th</sup>.

July had more rain than usual. Worcester recorded 18 days with measurable precipitation. Along the coast the temperatures were below normal, but inland they were a bit above average. Brian Cassie found a Pipevine Swallowtail on Great Blue Hill in Canton on the 12<sup>th</sup>. At the Mystic Lakes in Arlington/Medford the Harvester count was up to 9 on the 21<sup>st</sup>. Jason Forbes found the first Bronze Copper for the year at Great Meadows in Concord on the 2<sup>nd</sup>, and four were there on the 13<sup>th</sup>. The Bog Copper total in the Central Franklin NABA count circle was 658 on the 3<sup>rd</sup>. Hairstreaks were difficult to find in many places for much of the month; but some nice counts were still tallied in several locations. There were 17 Coral Hairstreaks on Great Blue Hill in Canton on the 24<sup>th</sup>; Tom Gagnon found 134 Acadian Hairstreaks (new state high count) in one location within the Central Berkshire count circle on the 17<sup>th</sup>. NABA counts on 16<sup>th</sup> came up with 138 Edward's on the Vineyard and 103 Banded in the Falmouth. A total of eight Hickory Hairstreaks were identified in locations from Mount Greylock to the Vineyard. Only four Oak Hairstreaks were reported; three of them were in the State Forest on Martha's



Vineyard on the 4<sup>th</sup>, and the last was new to the Concord Count on the 10<sup>th</sup>. A White M Hairstreak on the 30<sup>th</sup> was a good find along a power line in Dartmouth. Doug Savich counted 300 Silver-bordered Fritillaries and 1000 Pearl Crescents on Cape Ann on the 30<sup>th</sup>. Good numbers of Meadow Fritillaries were counted in Gill on the 4<sup>th</sup> and on the Southern Berkshire NABA count on the 12<sup>th</sup>. 31 Eastern Commas and 105 Milbert's Tortoiseshells were found on the Northampton count on the 16<sup>th</sup>. Compton Tortoiseshells were also well represented with the highest count being 12 on Mt. Greylock on the 10<sup>th</sup>. 20 Eyed Browns was a nice count in North Adams on the 4<sup>th</sup>. By the middle of the month it was evident that Monarchs had bounced back from their dismal numbers in 2004 and double-digit counts were being reported from several parts of the state. The Northampton NABA count circle usually hits the jackpot with respect to Common Sootywings, and the count of 106 on the 16<sup>th</sup> this year was no exception. Crossline Skipper numbers were above normal with 19 in Oak Bluffs on the 13<sup>th</sup>, 15 on the Blackstone Valley count, 49 on the Vineyard count, and 13 on Great Blue Hill in Canton on the 24<sup>th</sup>. Five Dion Skippers in North Adams on the 4<sup>th</sup> furnished a new early date for the species.

August was warm and dry. Worcester had 23 days with above average temperatures and Boston had 21. On the 27<sup>th</sup> Madeline Champagne found a White M Hairstreak in her Foxborough yard. Eastern Tailed-blues rallied at the end of the month with counts of 125 in Upton and 100 at Martin Burns WMA in Newbury. American Ladies were almost totally absent in August; but Painted Ladies were seen in good number throughout the state. A Tawny Emperor in the Northampton Community Gardens on the 21<sup>st</sup> furnished a new late date for the species. Very few skipper counts for the month stand out; but 40 Broad-winged Skippers in Marblehead on the 4<sup>th</sup> was notable.

The hot and dry weather continued into September. For the month the temperature was 3.2 degrees F. above average for Boston and 5.1 for Worcester. Rainfall was 1.69" below normal in Boston and 1.44" in Worcester. Cloudless Sulphurs were seen in good numbers for the first time in several years. Single Variegated Fritillaries were found in Dartmouth on the 10<sup>th</sup> and Northampton on the 21<sup>st</sup> and 22<sup>nd</sup>. American Ladies started to appear in numbers by the beginning of the month; but Painted Ladies were still much more common than the former. Doug Savich counted 56 Painted at Eastern Point in Gloucester on the 21<sup>st</sup> and Brian Cassie found 90 at Gooseberry Neck in Westport on the 24<sup>th</sup>. Only 3 Common Buckeyes were reported in September, and one on South Monomoy on the 4<sup>th</sup> was the first for the year! 124 Monarchs on the 19<sup>th</sup> was the first triple-digit count of the species in a couple of years. On the 21<sup>st</sup> Elise Barry counted 212 at Moore State Park in Paxton, and Doug Savich had a good 700 at Eastern Point in Gloucester on the 28<sup>th</sup>. Two Long-tailed Skippers were reported in September. One was in Gloucester on the 4<sup>th</sup> and the second was a Little's Farm in Newbury on the 18<sup>th</sup>. At least one Common Checkered Skipper appeared at the Northampton Community Gardens for the fifth year in a row on the 18<sup>th</sup>. On the 18<sup>th</sup> Doug Savich found a Fiery Skipper at Waring Field in Rockport. Leonard Skippers were well represented in September and it was especially great to see a report of 11 from Nantucket. Of the over 50,000 butterfly records in the club database only 22 are from Nantucket County! Tom Gagnon found male Sachem and Zabulon Skippers in the Northampton gardens on the 3<sup>rd</sup>. Ocola Skipper had a record year in the state. Although they started arriving later than 2004, they did it in the highest numbers ever. Doug Savich came up with a new state high for the species on the 20<sup>th</sup> when he found six individuals at Waring Field in Rockport.

October was a bit of a mixed bag to put it mildly. The month

started with beautiful weather for butterflying, with temperatures in the 70's and mostly sunny skies, and several MassLep posters expressed great hopes for their October lists. Bob Bowker found a Pipevine Swallowtail at the Allens Pond Wildlife Sanctuary on the 2<sup>nd</sup>. A Cloudless Sulphur was found inland at the Northampton Community Gardens on the 4<sup>th</sup> and the last for the year was seen on Cape Ann on the 7<sup>th</sup>. Bronze Coppers continued to be seen at the Wayland Community Gardens stronghold until the 5<sup>th</sup>. Painted Ladies continued their push through the state. 72 were counted on the 2<sup>nd</sup> on Horseneck Beach in Westport, where 822 Monarchs were also seen the same day. Fiery Skippers started to appear in numbers early in the month, with a maximum of four in Amherst on the 2<sup>nd</sup>. Two on Cape Ann on the 7<sup>th</sup> were the last skippers seen in the state in 2005. On the 6<sup>th</sup> Chris Gentes found (relocated) a Sachem at the Northampton Community Gardens, and the last Ocola Skipper was also seen there the same day. By the 8<sup>th</sup> the wind started switching into the northeast where it remained until the 16<sup>th</sup>. The temperature dropped to the 50's and low 60's F., and the sun was not seen very many places in the state until the 17<sup>th</sup>. The rest of the month remained mostly cold and cloudy and Boston recorded 1.1 inches of snow on the 29<sup>th</sup> – the most ever for the month of October. As could be expected butterflying suffered as result, and apart from the short break in the inclement weather between October 17 and 20, very few reports were received after the 8<sup>th</sup>. By the 30<sup>th</sup> the temperature crept into the 60's again and a small flurry of reports came in. A Summer Azure made an appearance in Hingham on the 17<sup>th</sup> and thereby extended the flight season for the species by twelve days.

November was warmer than usual, but Worcester had 25 days with measurable rainfall and Boston had 23. Ten species were reported for the month. Highlights included a Compton Tortoiseshell in Cummington on the 5<sup>th</sup>, a couple of American Ladies in Truro on

the 5<sup>th</sup>, Painted Ladies in Chilmark and Easthampton on the 1<sup>st</sup>. Red Admirals continued flying until the 12<sup>th</sup>, when two were seen at Gooseberry Neck in Westport. The last Monarch for the year was seen in Sutton on the 13<sup>th</sup>, and the last butterflies for the year were seen on Cape Ann on the 14<sup>th</sup>: a Cabbage White and two Orange Sulphurs.

**New High Count:**

Acadian Hairstreak – 134

Silvery Blue – 164

Long Dash – 200

Ocola Skipper - 6

**Record late flight date:**

West Virginia White – 6/12

Summer Azure – 10/17

Silvery Blue – 7/10

Tawny Emperor – 8/21

Long Dash – 9/21

**Record early flight date:**

Dion Skipper – 7/4

Sachem – 10/6

Abbreviations:

AF-Appleton Farms; AP-Allens Pond; BFD-Barre Falls Dam; BMBWS-Broad Meadow Brook Wildlife Sanctuary; CA-Conservation Area; CG-Community Gardens; CHR-Cherry Hill Reservoir; CRPL-Concord Rd PL;DM-Dunback Meadows; FSWMA-Fannie Stebbins Wildlife Management Area; GBH-Great Blue Hill; GMNWR-Great Meadows NWR; GN-Gooseberry Neck; HPM-Horn Pond Mountain; IRWS-Ipswich River Wildlife Sactuary; LF/JF-Little's Farm/Joppa Flats; MMP-Mountain Meadows Preserve; MNWRH-Monomoy NWR Headquarters; MPRA-Mill Pond Recreational Area; MSSF-Myles Standish State Forest; NABA-NABA Butterfly Count (4th of July Count); NCM-North Common Meadows; NP-Newburyport; NWR-National Wildlife Refuge; PL-Power Line; Res-Reservation (or Reservoir); SP-State Park; TRPL-Turnpike Road Powerline; WMA-Wildlife Management Area; WMWS- Wachusett Meadow Wildlife Sanctuary; WS-Wildlife Sanctuary

### Pipeline Swallowtail

7/12 GBH,Canton 1 Brian Cassie  
10/2 AP,Dartmouth 1 Bob Bowker

### Black/Spicebush Swallowtail

5/9 E Longmeadow 1 Karen Parker

### Black Swallowtail

4/18 Sandy Beach,Winchester 1 Renee LaFontaine  
5/5 IRWS,Topsfield 1 Fred Goodwin  
5/9 Bike Path,Amherst 1 Ron+Sue Cloutier  
5/10 Essex County 2 S Stichter+F Goodwin  
5/14 Holyoke 2 Roger Pease  
6/5 Little's Farm,Newbury 3 Sharon Stichter  
6/5 W Bridgewater 3 Don Adams  
6/11 GBH,Canton 6 Erik Nielsen  
6/13 Keith Farm,Chilmark 1 Allan Keith  
7/3 Prospect Hill,Waltham 2 Jason Forbes  
7/5 Stichter Yard,Newbury 3 Sharon Stichter  
7/12 GBH,Canton 2 M. Champagne  
7/23 Middleboro NABA 11 Karen Holmes  
7/30 World's End,Hingham 30 Bob Bowker  
8/6 Leicester 18 MBC(D. Price)  
8/14 GMNWR,Concord 12 Erik Nielsen  
9/2 Northampton CG 4 Bill Benner  
9/3 Wayland CG 5 Steve Moore+V.O.  
9/11 Wayland CG 9 Erik Nielsen  
9/14 Cape Ann 1 Doug Savich  
9/18 Northampton CG 2 MBC(T. Gagnon)  
9/21 Chilmark 1 Allan Keith  
10/3 Sudbury CG 1 Ron+Sue Cloutier

### Tiger Swallowtail (spp)

5/10 Foxborough 1 M. Champagne  
5/10 Hadley 1 Karen Parker  
5/10 Moore SP,Paxton 1 Elise Barry  
5/14 Mount Tom State Res. 2 Roger Pease  
5/19 Lamson Rd,Foxborough 1 M. Champagne  
5/28 W Bridgewater 2 Don Adams  
5/30 Petersham 5 Carl Kamp #  
6/3 Graves Farm,Williamsburg 4 Bill Benner  
6/5 Mount Greylock 29 MBC(Benner+Gagnon)  
6/20 Warwick Rd PL,Royalston 9 Carl Kamp  
6/23 BFD,Hubbardston 9 Price+Barry+Mullen  
7/2 HPM,Wobum 4 MBC(Marj Rines)  
7/4 Moran WMA,Windsor 11 M Lynch+S Carroll  
7/4 Mount Greylock 12 Cloutier #  
7/19 Marblehead 2 Karen Haley  
7/31 W Bridgewater 8 Don Adams  
9/1 Cape Ann 1 Doug Savich  
9/23 E Longmeadow 1 Karen Parker  
9/23 Springfield 1 Karen Parker

### Eastern Tiger Swallowtail

5/13 Whately 1 Bill Benner  
5/15 Norcross WS,Monson 1 Elise Barry  
5/29 Delaney WMA,Stow 2 MBC(B. Walker)  
6/11 Mount Wachusets,Princeton 4 S Moore+B Volke  
6/24 BFD,Hubbardston 9 Dolores Price #  
7/2 IRWS,Topsfield 2 Bob Speare #  
7/3 Prospect Hill,Waltham 2 Jason Forbes  
7/16 Crane WMA,Falmouth 1 Alison Robb  
7/16 Haley Yard,Marblehead 2 Karen Haley  
7/23 Middleboro NABA 3 Karen Holmes  
7/23 Springfield 3 Tom Gagnon  
7/29 Stichter Yard,Newbury 4 Sharon Stichter  
7/30 World's End,Hingham 4 Bob Bowker

8/6 Leicester 5 MBC(DoloresPrice)  
8/14 FSWMA,Longmeadow 6 MBC(Gagnon+Parker)  
8/28 W Bridgewater 4 Don Adams  
9/3 Stichter Yard,Newbury 1 Sharon Stichter  
9/3 Wayland CG 1 Steve Moore+V.O.  
9/8 IRWS,Topsfield 1 Fred Goodwin  
9/10 AP Allens Neck,Dartmouth 1 Erik Nielsen+V.O.

### Canadian Tiger Swallowtail

5/29 Cummington 1 Barbara Spencer  
6/5 Rowden Yard,Leicester 1 Mark Rowden  
6/5 Shrewsbury PL 1 S Moore+B Volke  
7/4 Mount Greylock 8 Cloutier #  
7/10 Mount Greylock 2 Tom Gagnon #

### Spicebush Swallowtail

5/28 Lamson Rd,Foxborough 1 M. Champagne  
5/28 Middleborough 1 Karen Holmes  
5/29 E Longmeadow 1 Karen Parker  
6/4 Quabbin Park,Belchertown 1 S Moore+B Volke  
7/3 Prospect Hill,Waltham 2 Jason Forbes  
7/4 BMBWS,Worcester 4 Barbara Walker  
7/11 Edgartown 1 Allan Keith  
7/11 Stichter Yard,Newbury 2 Sharon Stichter  
7/16 Falmouth 5 Alison Robb  
7/16 Tisbury 2 Allan Keith  
7/23 Middleboro NABA 5 Karen Holmes  
7/31 W Bridgewater 6 Don Adams  
8/6 E Longmeadow 2 Karen Parker  
8/14 FSWMA,Longmeadow 3 MBC(Gagnon+Parker)  
8/28 W Bridgewater 3 Don Adams  
9/5 GBH,Canton 1 Erik Nielsen  
9/6 Boston Nature Center 1 Andrew Birch  
9/19 Chappaquidic,Edgartown 2 Allan Keith

### Mustard White

4/17 Lenox 1 Roger Pease  
4/18 Lenox 2 Roger Pease  
4/20 Lenox 11 Roger Pease  
5/19 Lenox 30 Barbara Spencer  
7/24 Berkshire County 1 Bill Benner #

### West Virginia White

4/18 Lenox 1 Roger Pease  
5/5 Chesterfield 3 Barbara Spencer  
5/9 Cummington 1 Barbara Spencer  
5/9 Sunderland 4 Ron+Sue Cloutier  
5/30 Cummington 1 Barbara Spencer  
6/5 Mount Greylock 14 MBC(Benner+Gagnon)

### Cabbage White

3/29 Oak Bluffs 1 Matt Pelikan  
4/4 Middleborough 1 Karen Holmes  
4/8 Florence 1 Tom Gagnon  
4/9 Foxborough 1 M. Champagne  
4/18 BMBWS,Worcester 4 Walker+Howe-Trenholm  
4/19 Greendale,Worcester 3 Mark Rowden  
5/2 Fowl Meadows,Milton 6 Paula Chasan  
5/4 Keith Farm,Chilmark 3 Allan Keith  
5/12 Cape Ann 7 Doug Savich  
5/19 Wyman Woods,Marblehead 12 Karen Haley  
5/28 W Bridgewater 10 Don Adams  
7/2 Paine Estate,Waltham 15 Jason Forbes  
7/3 GBH,Canton 21 MBC(Murray+Nielsen)  
7/4 Gill 30 Cloutier #  
7/16 Crane WMA,Falmouth 12 Alison Robb  
7/19 Wilbraham 7 Roger Pease  
7/23 Middleboro NABA 105 Karen Holmes

Massachusetts Butterflies No. 26, Spring 2006

© Copyright 2006 Massachusetts Butterfly Club. All rights reserved.

7/24 Cape Ann 20 Doug Savich  
 7/30 World's End,Hingham 25 Bob Bowker  
 8/5 Northampton CG 50 Bill Benner  
 8/7 Fort Hill,Eastham 70 M Lynch+S Carroll  
 8/8 Plum Island 64 M Lynch+S Carroll  
 8/21 Northampton CG 35 Bill Benner+VO  
 9/3 Westport 300 E Nielsen+T Raymond  
 9/5 Northampton CG 100 S Moore+B Volke  
 9/8 Nantucket 22 Bill Benner  
 9/11 Wayland CG 30 S Moore+B Volke  
 9/19 Cape Ann 18 Doug Savich  
 9/24 Colrain 30 M Lynch+S Carroll  
 10/1 Wayland CG 26 S Moore+B Volke  
 10/2 Gooseberry Neck,Westport 25 Bob Bowker  
 10/6 AP,Dartmouth 20 Tom Murray  
 10/18 Boston Nature Center 1 Andrew Birch  
 11/1 Holliston 2 Richard Hildreth  
 11/5 Wayland CG 1 S Moore+B Volke  
 11/12 Swansea 1 M Lynch+S Carroll  
 11/13 Gloucester 1 Jim Berry  
 11/14 Cape Ann 1 Doug Savich

### Clouded Sulphur

4/18 Chilmark 1 Allan Keith  
 4/28 Keith Farm,Chilmark 1 Allan Keith  
 5/3 Cape Ann 1 Doug Savich  
 5/5 Quabbin Park,Belchertown 3 Dave Small  
 5/5 Whately 1 Bill Benner  
 5/9 Eastman Brook,Amherst 6 Ron+Sue Cloutier  
 5/15 Norcross WS,Monson 5 Elise Barry  
 5/28 Dauphinis Park,Grafton 9 Dolores Price  
 5/29 Delaney WMA,Stow 15 MBC(B. Walker)  
 5/30 HVD,Oxford 8 Barbara Walker  
 6/3 Graves Farm,Williamsburg 30 Bill Benner  
 6/11 Graves Farm,Williamsburg 16 Bill Benner  
 7/3 GBH,Canton 14 MBC(Murray+Nielsen)  
 7/4 Gill 18 Cloutier #  
 7/10 Little's Farm,Newbury 62 Erik Nielsen  
 7/12 S Berkshire NABA 315 Renee Laubach  
 7/16 MV NABA 159 Matt Pelikan  
 7/16 Northampton NABA 578 Dottie Case  
 7/23 Brewster NABA 10 Alison Robb #  
 7/23 Middleboro NABA 50 Karen Holmes  
 7/30 World's End,Hingham 25 Bob Bowker  
 8/6 Leicester 17 MBC (D. Price)  
 8/8 Plum Island 18 M Lynch+S Carroll  
 9/2 Northampton CG 13 Bill Benner  
 9/3 Westport 200 Nielsen+Raymond  
 9/13 Granby 15 Carl Kamp  
 9/19 Dunback Meadows, Lexington 20 Andrew Birch  
 9/21 Moore Sp,Paxton 85 Elise Barry  
 10/2 Marlborough 12 Steve Moore  
 10/6 AP,Dartmouth 25 Tom Murray  
 10/31 Springfield 1 Karen Parker  
 11/1 AP,Dartmouth 2 M. Champagne  
 11/1 Katama,Edgartown 1 Allan Keith  
 11/4 Ipswich 1 Jim Berry  
 11/4 Plum Island 1 Jim Berry  
 11/6 Moore Sp,Paxton 1 Elise Barry  
 11/12 Swansea 1 M Lynch+S Carroll

### Orange Sulphur

5/10 Keith Farm,Chilmark 3 Allan Keith  
 5/13 Rt 20 And Rt 31,Charlton 3 Mark Rowden  
 5/28 Dauphinis Park,Grafton 1 Dolores Price  
 5/29 Delaney WMA,Stow 8 MBC(B. Walker)  
 5/30 Stichter Yard,Newbury 1 Sharon Stichter  
 6/6 Delaney WMA,Stow 48 Erik Nielsen

6/25 MBWMA,Newbury 3 MBC(S Stichter)  
 7/2 IRWS,Topsfield 6 Bob Spere #  
 7/2 Williams Land,Harvard 5 Tom Murray #  
 7/4 Mount Greylock 8 Cloutier #  
 7/10 IRWS,Topsfield 12 Fred Goodwin #  
 7/10 Little's Farm,Newbury 22 Erik Nielsen  
 7/12 Parker River NWR Hq,NP 10 Sharon Stichter #  
 7/23 Middleboro NABA 10 Karen Holmes  
 7/30 World's End,Hingham 25 Bob Bowker  
 8/9 Katama,Edgartown 50 Allan Keith  
 9/2 Bolton Flats 25 Tom Murray  
 9/3 Westport 600 E Nielsen+T Raymond  
 9/19 MV 20 Allan Keith  
 9/21 Moore Sp,Paxton 24 Elise Barry  
 10/2 Horseneck Beach,Westport 40 Brian Cassie  
 10/2 Marlborough 62 Steve Moore  
 10/30 Delaney WMA,Stow 41 Tom Murray  
 11/1 AP,Dartmouth 3 M. Champagne  
 11/3 Peterson Farm,Falmouth 3 Alison Robb  
 11/5 Oak Bluffs 1 Allan Keith  
 11/6 Moore SP,Paxton 2 Elise Barry  
 11/6 Pittsfield 1 Tom Gagnon  
 11/13 Sewer Beds,Northbridge 1 Richard Hildreth  
 11/14 Cape Ann 2 Doug Savich

### Cloudless Sulphur

9/1 Barnstable 1 Kevin Hemeon  
 9/1 Edgartown 1 Matt Pelikan  
 9/1 Marion 1 Mike Maurer  
 9/2 Crane WMA,Falmouth 1 Kevin Hemeon  
 9/2 Keith Farm,Chilmark 1 Allan Keith  
 9/3 AP,Dartmouth 1 Nielsen+Raymond  
 9/3 Aquinnah 2 Matt Pelikan  
 9/3 Cape Ann 6 Doug Savich  
 9/3 Gooseberry Neck,Westport 1 Nielsen+Raymond  
 9/3 Rockport 2 Doug Savich  
 9/3 S Beach,Chatham 4 B Nikula+J Trimble  
 9/4 Cape Ann 1 Doug Savich  
 9/4 Halibut Point SP,Rockport 2 Claudia Tibbits  
 9/4 S Monomoy 1 Blair Nikula  
 9/5 AP,Dartmouth 3 Erik Nielsen  
 9/5 Coast Guard Beach,Eastham 1 J Trimble+V Laux  
 9/5 Morris Island,Chatham 4 J Trimble+V Laux  
 9/8 Nantucket 1 Bill Benner  
 9/10 AP Allens Neck,Dartmouth 1 Erik Nielsen+V.O.  
 9/19 Hunsley Hills CA,Rowley 1 Tom Murray  
 9/22 Katama,Edgartown 1 Allan Keith  
 10/4 Northampton CG 1 Barbara Spencer  
 10/7 Cape Ann 1 Doug Savich

### Harvester

6/9 ML,Arlington/Medford 3 LaFontaine+ Rines  
 6/12 ML,Arlington/Medford 7 LaFontaine+ Rines  
 7/15 Medford 2 Renee LaFontaine  
 7/21 ML,Arlington/Medford 9 Renee LaFontaine  
 7/24 Northampton 1 Bill Benner #  
 8/17 ML,Arlington/Medford 9 Renee LaFontaine  
 8/20 Oxbow Nwr,Harvard 1 Tom Murray  
 9/8 Arlington 1 Renee LaFontaine  
 9/8 Medford 5 Renee LaFontaine  
 9/11 Arlington 1 S Moore+B Volke

### American Copper

5/11 E Longmeadow 1 Karen Parker  
 5/12 Cape Ann 1 Doug Savich  
 5/13 Keith Farm,Chilmark 1 Allan Keith  
 5/13 Northborough 3 Barbara Volke  
 5/13 TRPL,Chelmsford 3 Tom Whelan  
 5/15 Norcross WS,Monson 11 Elise Barry

5/20 Lamson Rd,Foxborough 3 Tom Whelan  
 5/29 Florence 4 Tom Gagnon  
 5/30 Athol 3 Carl Kamp #  
 5/30 Larkin RA,Northbridge 3 D Price+W Miller  
 6/1 Nomans Island,Chilmark 25 Allan Keith  
 6/3 Lamson Rd,Foxborough 4 M. Champagne  
 6/5 Little's Farm,Newbury 10 Sharon Stichter  
 6/11 Keith Farm,Chilmark 5 Allan Keith  
 7/3 E Longmeadow 5 Karen Parker  
 7/12 Dauphinis Park,Grafton 9 Dolores Price #  
 7/13 CRPL,Chelmsford 12 Tom Whelan  
 7/16 Blackstone Valley NABA 73 Tom Dodd #  
 7/16 MV NABA 123 Matt Pelikan  
 7/18 Nomans Island,Chilmark 20 Allan Keith  
 7/20 Little's Farm,Newbury 53 Sharon Stichter  
 9/1 GBH,Canton 4 Tom Murray  
 9/11 E Longmeadow 6 Karen Parker  
 9/13 Chicopee 6 Carl Kamp  
 9/19 Hunsley Hills CA,Rowley 27 Tom Murray  
 9/21 Cape Ann 7 Doug Savich  
 9/30 E Longmeadow 1 Karen Parker  
 10/3 Hunsley Hills CA,Rowley 15 Tom Murray  
 10/6 AP,Dartmouth 5 Tom Murray  
 10/7 Cape Ann 1 Doug Savich  
 10/22 Easthampton 1 Bruce King  
 11/1 AP,Dartmouth 1 Madeline  
 Champagne

### Bronze Copper

7/2 GMNWR,Concord 1 Jason Forbes  
 7/10 Concord NABA 1 Dick Walton #  
 7/13 GMNWR,Concord 4 Brian Cassie  
 8/14 GMNWR,Concord 4 Erik Nielsen  
 9/1 Wayland CG 1 Tom Murray  
 9/3 Wayland CG 1 Steve Moore+V.O.  
 9/10 Ware River Watershed 1 M Lynch+S Carroll  
 9/11 Wayland CG 2 Erik Nielsen  
 9/14 Wayland CG 1 Tom Whelan  
 10/1 Wayland CG 7 S Moore+B Volke  
 10/2 NAC,Concord 3 Erik Nielsen  
 10/2 Wayland CG 7 Nielsen+T Murray  
 10/3 Sudbury CG 1 Ron+Sue Cloutier  
 10/5 NAC,Concord 5 Tom Murray  
 10/5 Wayland CG 2 Tom Murray

### Bog Copper

6/26 Tully Dam,Athol 2 Carl Kamp  
 6/26 Tully Dam,Royalston 4 Carl Kamp  
 7/3 C Franklin NABA 658 Mark Fairbrother #  
 7/3 Cape Ann 5 Doug Savich  
 7/10 N Essex NABA 8 Fred Goodwin #  
 7/10 N Worcester NABA 39 Carl Kamp  
 7/11 Cape Ann 1 Doug Savich  
 7/13 Truro NABA 11 Tor Hansen #  
 7/16 Lambert's Cove Rd,W 3 Allan Keith  
 7/24 Gate 8,Boylston 2 MBC(Wendy Miller)

### Coral Hairstreak

7/3 C Franklin NABA 5 Mark Fairbrother #  
 7/4 Gill 4 Cloutier #  
 7/10 Concord NABA 6 Dick Walton #  
 7/12 GBH,Canton 2 M. Champagne  
 7/12 HPM,Wobum 1 Renee LaFontaine  
 7/12 MBWMA,Newbury 1 Sharon Stichter #  
 7/14 MBWMA,Newbury 1 Sharon Stichter  
 7/16 MV NABA 5 Matt Pelikan  
 7/19 Bristol NABA 5 Mark Mello #  
 7/24 Berkshire County 1 Bill Benner #  
 7/24 GBH,Canton 17 Erik Nielsen

7/25 Cape Ann 1 Doug Savich  
 7/27 Wellfleet 2 Tom Whelan  
 7/30 Barnstable NABA 1 Alison Robb #

### Acadian Hairstreak

7/10 Mount Greylock 1 Tom Gagnon #  
 7/12 Dauphinis Park,Grafton 3 Dolores Price #  
 7/12 HPM,Wobum 2 Renee LaFontaine  
 7/12 S Berkshire NABA 7 Renee Laubach  
 7/15 HPM,Wobum 5 Tom Whelan  
 7/16 Blackstone Valley NABA 3 Tom Dodd #  
 7/17 C Berkshire NABA 134 Tom Gagnon  
 7/19 Bristol NABA 12 Mark Mello #  
 7/24 Berkshire County 36 Bill Benner #

### Edwards' Hairstreak

7/2 E Longmeadow 2 Karen Parker  
 7/2 HPM,Wobum 3 MBC(Marj Rines)  
 7/3 GBH,Canton 25 MBC(Murray+Nielsen)  
 7/5 Sherborn PL 2 M. Champagne#  
 7/12 Dauphinis Park,Grafton 1 Dolores Price #  
 7/12 HPM,Wobum 3 Renee LaFontaine  
 7/15 W Tisbury 5 Allan Keith  
 7/16 Falmouth NABA 58 Alison Robb #  
 7/16 MV NABA 138 Matt Pelikan  
 7/22 E Longmeadow 1 Karen Parker  
 7/23 GBH,Canton 7 Erik Nielsen  
 7/24 E Longmeadow 1 Karen Parker  
 7/29 Tuckermuck Island 1 Matt Pelikan

### Banded Hairstreak

6/26 Rowden Yard,Leicester 1 Mark Rowden  
 7/1 E Longmeadow 2 Karen Parker  
 7/2 HPM,Wobum 10 MBC(Marj Rines)  
 7/2 Rowden Yard,Leicester 4 Mark Rowden  
 7/3 C Franklin NABA 73 Mark Fairbrother #  
 7/3 GBH,Canton 12 MBC(Murray+Nielsen)  
 7/10 N Worcester NABA 9 Carl Kamp  
 7/12 S Berkshire NABA 39 Renee Laubach  
 7/15 Lexington 8 Tom Whelan  
 7/16 Falmouth NABA 103 Alison Robb #  
 7/17 Crane WMA,Falmouth 40 Alison Robb  
 7/21 Williamstown 4 Pam Weatherbee  
 7/23 Brewster NABA 1 Alison Robb #  
 7/23 GBH,Canton 6 Erik Nielsen  
 7/23 Middleboro NABA 1 Karen Holmes  
 7/24 Berkshire County 2 Bill Benner #  
 7/30 Quabbin Park,Belchertown 4 M Lynch+S Carroll  
 8/4 Rowden Yard,Leicester 4 Mark Rowden  
 8/10 Stichter Yard,Newbury 1 Sharon Stichter

### Hickory Hairstreak

7/3 Oak Bluffs 1 Matt Pelikan  
 7/4 Gill 2 Cloutier #  
 7/10 Mount Greylock 2 Tom Gagnon #  
 7/16 Northampton NABA 2 Dottie Case  
 7/26 Stony Brook Res,Norfolk 1 Paula Chasan

### Striped Hairstreak

7/2 E Longmeadow 1 Karen Parker  
 7/2 HPM,Wobum 6 MBC(Marj Rines)  
 7/3 Fairgrounds,Cummington 1 Barbara Spencer  
 7/3 GBH,Canton 6 BC(Murray+Nielsen)  
 7/10 IRWS,Topsfield 2 Fred Goodwin #  
 7/10 N Worcester NABA 6 Carl Kamp  
 7/12 GBH,Canton 4 M. Champagne  
 7/12 S Berkshire NABA 10 Renee Laubach  
 7/16 Blackstone Valley NABA 4 Tom Dodd #  
 7/16 Northampton NABA 2 Dottie Case  
 7/19 Bristol NABA 1 Mark Mello #

Massachusetts Butterflies No. 26, Spring 2006

© Copyright 2006 Massachusetts Butterfly Club. All rights reserved.

7/21 Cummington 1 Barbara Spencer  
 7/25 Sherborn PL 1 Bob Bowker  
 7/27 Wellfleet 1 Tom Whelan  
 8/12 Whately 1 Bill Benner  
 8/21 Cape Ann 1 Doug Savich

### Oak Hairstreak

7/4 MV SF 3 Matt Pelikan  
 7/10 Concord NABA 1 Dick Walton #

### Brown Elfin

4/17 Cape Ann 1 Doug Savich  
 4/17 GBH,Canton 5 Erik Nielsen  
 4/17 HPM,Wobum 2 Marjory Rines  
 4/17 Royalston 3 Carl Kamp  
 4/18 BMBWS,Worcester 5 Walker+Howe-Trenholm  
 4/18 HPM,Wobum 5 Betty Wright  
 4/19 HPM,Wobum 3 Tom Whelan  
 5/3 Lamson Rd,Foxborough 1 M. Champagne  
 5/5 MV SF 15 Allan Keith  
 5/10 TRPL,Chelmsford 2 Tom Whelan  
 5/15 MSSF,Plymouth 35 MBC(Murray+Nielsen)  
 5/15 Norcross WS,Monson 1 Elise Barry  
 5/28 Middleborough 1 Karen Holmes  
 5/29 MSSF,Plymouth 15 Tom Murray  
 5/30 Rutland SP 1 Elise Barry

### Hoary Elfin

5/5 MV SF 1 Allan Keith  
 5/15 MSSF,Plymouth 9 MBC(Murray+Nielsen)

### Frosted Elfin

5/3 Lamson Rd,Foxborough 2 M. Champagne  
 5/10 Lamson Rd,Foxborough 7 M. Champagne  
 5/15 MSSF,Plymouth 1 MBC(Murray+Nielsen)  
 5/17 Lamson Rd,Foxborough 42 M. Champagne  
 5/19 Lamson Rd,Foxborough 31 M. Champagne  
 5/20 Lamson Rd,Foxborough 38 Tom Whelan  
 5/28 Lamson Rd,Foxborough 62 M. Champagne  
 6/2 CRPL,Chelmsford 1 Tom Whelan  
 6/3 Lamson Rd,Foxborough 85 M. Champagne  
 6/11 Lamson Rd,Foxborough 17 Erik Nielsen  
 6/21 Crane WMA,Falmouth 1 Alison Robb

### Henry's Elfin

4/22 Great Meadows,Lexington 1 Tom Whelan  
 5/2 Fowl Meadows,Milton 6 Paula Chasan  
 5/17 Lamson Rd,Foxborough 2 M. Champagne

### Eastern Pine Elfin

4/17 HPM,Wobum 1 Marjory Rines  
 4/18 Holliston 1 Richard Hildreth  
 5/5 Lamson Rd,Foxborough 3 M.Champagne  
 5/5 MV SF 1 Allan Keith  
 5/5 Quabbin Park,Belchertown 1 Dave Small  
 5/5 Whately 3 Bill Benner  
 5/9 Bike Path,Amherst 6 Ron+Sue Cloutier  
 5/9 Cummington 1 Barbara Spencer  
 5/9 E Longmeadow 5 Karen Parker  
 5/9 Sunderland 3 Ron+Sue Cloutier  
 5/11 Assabet River NWR,Stow 4 B Volkle+S Moore  
 5/13 E Longmeadow 6 Karen Parker  
 5/15 MSSF,Plymouth 7 MBC(Murray+Nielsen)  
 5/29 MSSF,Plymouth 5 Tom Murray  
 5/30 Athol 1 Carl Kamp #  
 5/30 HVD,Oxford 1 Barbara Walker  
 5/30 Rutland SP 6 Elise Barry  
 6/4 Ware River Watershed 1 M Lynch+S Carroll  
 6/10 Whately 2 Bill Benner  
 6/11 Graves Farm,Williamsburg 1 Bill Benner

### Juniper Hairstreak

5/9 Eastman Brook,Amherst 1 Ron+Sue Cloutier  
 5/10 Cedar Hill,Lexington 2 Tom Whelan  
 5/28 Cedar Hill,Lexington 5 Tom Whelan  
 7/23 GBH,Canton 1 Erik Nielsen

### White M Hairstreak

7/30 Lucy Little Rd PL,Dartmouth 1 Brian Cassie  
 8/27 Foxborough 1 M. Champagne

### Gray Hairstreak

6/11 GBH,Canton 1 Erik Nielsen  
 7/10 N Worcester NABA 1 Carl Kamp  
 7/16 Blackstone Valley NABA 3 Tom Dodd #  
 7/25 Middleborough 1 Karen Holmes  
 7/25 Sherborn PL 1 Bob Bowker  
 8/6 Tower Hill,Boylston 1 Wendy Miller  
 8/18 Wayland CG 1 Tom Murray  
 8/21 HPM,Wobum 1 Tom Whelan  
 9/1 GBH,Canton 4 Tom Murray  
 9/4 Cape Ann 2 Doug Savich  
 9/10 AP Allens Neck,Dartmouth 2 Erik Nielsen+V.O.  
 9/12 Mount Wachusetts,Princeton 1 Barbara Walker  
 9/13 Plum Island 4 Sharon Stichter #  
 9/21 Cape Ann 1 Doug Savich  
 9/21 Marblehead 2 Karen Haley  
 10/3 Hunsley Hills CA,Rowley 1 Tom Murray

### Early Hairstreak

6/5 Mount Greylock 12 Mike Nelson  
 6/12 Mount Greylock 2 M Lynch+S Carroll

### Eastern Tailed-Blue

5/10 Lamson Rd,Foxborough 2 M. Champagne  
 5/10 TRPL,Chelmsford 4 Tom Whelan  
 5/11 HPM,Wobum 6 Tom Whelan  
 5/15 Norcross WS,Monson 1 Elise Barry  
 5/28 Dauphinis Park,Grafton 3 Dolores Price  
 5/30 HVD,Oxford 1 Barbara Walker  
 6/4 BMBWS,Worcester 5 MBC(Jo-Ann Mullen)  
 6/4 NP 2 Sharon Stichter  
 6/5 HPM,Wobum 15 Betty Wright  
 6/5 Shrewsbury PL 3 S Moore+B Volke  
 7/3 E Longmeadow 4 Karen Parker  
 7/3 GBH,Canton 4 MBC(Murray+Nielsen)  
 7/4 Gill 15 Cloutier #  
 7/10 MBWMA,Newbury 12 Sharon Stichter #  
 7/12 Dauphinis Park,Grafton 12 Dolores Price #  
 8/6 Leicester 25 MBC(D. Price)  
 8/14 GMNWR,Concord 28 Erik Nielsen  
 8/21 Northampton CG 16 Bill Benner+VO  
 8/26 Upton 125 Brian Cassie  
 8/27 MBWMA,Newbury 100 Erik Nielsen  
 9/3 AP,Dartmouth 14 Nielsen+ Raymond  
 9/18 Northampton CG 10 MBC(T. Gagnon)  
 9/19 Dunback Meadows, Lexington 9 Andrew Birch  
 9/21 Boston Nature Center 1 Andrew Birch  
 9/21 Oxbow Nwr,Harvard 3 Tom Murray  
 9/22 Cape Ann 4 Doug Savich  
 9/22 Whately 2 Bill Benner  
 10/1 Northampton CG 1 T Gagnon+R Cloutier  
 10/2 Marlborough 4 Steve Moore  
 10/5 NAC,Concord 2 Tom Murray  
 10/5 Sudbury CG 2 Tom Murray  
 10/5 Wayland CG 2 Tom Murray

### Spring Azure

4/7 Holliston 1 Richard Hildreth  
 4/9 Broadmoor WS,Natick 1 Bob Bowker



4/9 Hatchville Woods,Falmouth 1 Alison Robb  
 4/10 Assabet River NWR,Stow 2 S Moore+B Volke  
 4/14 Cape Ann 1 Doug Savich  
 4/14 Holliston 4 Richard Hildreth  
 4/17 Assabet River NWR,Stow 11 S Moore+B Volke  
 4/17 Dauphinis Park,Grafton 8 Barbara Walker  
 4/17 E Longmeadow 1 Karen Parker  
 4/18 Holliston 10 Richard Hildreth  
 4/18 Plum Island 1 Bill Gette  
 4/23 E Longmeadow 5 Karen Parker  
 5/2 Fowl Meadows,Milton 12 Paula Chasan  
 5/3 Lamson Rd,Foxborough 6 M. Champagne  
 5/5 MV SF 5 Allan Keith  
 5/9 E Longmeadow 6 Karen Parker  
 5/10 TRPL,Chehmsford 6 Tom Whelan  
 5/10 W Newbury 4 Jim Berry  
 5/11 Assabet River NWR,Stow 55 B Volke+S Moore  
 5/11 Old Town Hill,Newbury 8 Sharon Stichter  
 5/14 Cedar Hill,Lexington 7 Tom Whelan  
 5/15 MSSP,Plymouth 12 MBC(Murray+Nielsen)  
 5/28 Quabog WMA,Brookfield 15 M Lynch+S Carroll  
 5/30 HVD,Oxford 14 Barbara Walker  
 6/4 Katama,Edgartown 5 Allan Keith  
 6/4 Ware River Watershed 40 M Lynch+S Carroll  
 6/5 Mount Greylock 18 MBC(Benner+Gagnon)  
 6/11 Sherborn PL 2 Bob Bowker  
 6/12 Rowden Yard,Leicester 4 Mark Rowden  
 7/4 Moran WMA,Windsor 1 M Lynch+S Carroll  
 7/10 Ipswich 2 Jim Berry #

### 'Summer' Spring Azure

6/4 E Longmeadow 1 Karen Parker  
 6/25 E Longmeadow 1 Karen Parker  
 6/26 Tully Dam,Athol 1 Carl Kamp  
 7/3 C Franklin NABA 6 Mark Fairbrother #  
 7/3 GBH,Canton 2 MBC(Murray+Nielsen)  
 7/10 Concord NABA 3 Dick Walton #  
 7/10 IRWS,Topsfield 16 Fred Goodwin #  
 7/16 Blackstone Valley NABA 16 Tom Dodd #  
 7/16 MV NABA 1 Matt Pelikan  
 7/16 Northampton NABA 7 Dottie Case  
 7/24 Berkshire County 9 Bill Benner #  
 8/6 Stichter Yard,Newbury 2 Sharon Stichter  
 8/13 FSWMA,Longmeadow 3 Erik Nielsen  
 8/13 Sheffield 1 M Lynch+S Carroll  
 8/17 Plum Island 1 Sharon Stichter  
 8/18 Cape Ann 1 Doug Savich  
 8/21 Whately 2 Bill Benner  
 8/24 Crane WMA,Falmouth 1 Alison Robb  
 8/25 Cape Ann 1 Doug Savich  
 9/10 AP Allens Neck,Dartmouth 3 Erik Nielsen+V.O.  
 9/17 Mount Tom State Res. 2 Tom Gagnon  
 10/17 Hingham 1 Erik Nielsen

### Silvery Blue

5/29 Delaney WMA,Stow 88 MBC(B. Walker)  
 5/30 Athol 1 Carl Kamp #  
 5/30 Cummington 1 Barbara Spencer  
 5/30 Rutland SP 2 Elise Barry  
 6/3 Graves Farm,Williamsburg 9 Bill Benner  
 6/5 Moran WMA,Windsor 3 MBC(Benner+Gagnon)  
 6/6 Delaney WMA,Stow 164 Erik Nielsen  
 6/11 Graves Farm,Williamsburg 3 Bill Benner  
 6/11 WMWS,Princeton 6 S Moore+B Volke  
 7/10 N Worcester NABA 1 Carl Kamp

### Variagated Fritillary

6/4 Whately 1 Bill Benner #  
 9/10 AP,Dartmouth 1 Tom Murray+V.O.

9/21 Northampton CG 1 Barbara Spencer  
 9/22 Northampton CG 1 Frank Model

### Great Spangled Fritillary

6/12 Hadley 1 Bill Benner #  
 6/18 E Longmeadow 1 Karen Parker  
 6/19 E Longmeadow 2 Karen Parker  
 6/25 Beebe Meadow,Wellesley 1 Bob Bowker  
 7/2 Rowden Yard,Leicester 1 Mark Rowden  
 7/2 Williams Land,Harvard 3 Tom Murray #  
 7/3 GBH,Canton 4 MBC(Murray+Nielsen)  
 7/4 BMBWS,Worcester 6 Barbara Walker  
 7/4 Moran WMA,Windsor 4 M Lynch+S Carroll  
 7/10 MBWMA,Newbury 12 Sharon Stichter #  
 7/12 Dauphinis Park,Grafton 10 Dolore Price#  
 7/21 Cummington 6 Barbara Spencer  
 7/23 Middleboro NABA 5 Karen Holmes  
 7/23 W Bridgewater 4 Don Adams  
 7/24 Gate 8,Boylston 6 MBC(Wendy Miller)  
 7/30 World's End,Hingham 8 Bob Bowker  
 8/21 Northampton CG 4 Bill Benner+VO  
 8/28 Wayland CG 2 Wendy Miller  
 9/2 Northampton CG 11 Bill Benner  
 9/19 Dunback Meadows, Lexington 1 Andrew Birch  
 9/21 Marblehead 1 Karen Haley  
 9/21 Sandisfield 1 Mark Rowden  
 9/22 Whately 1 Bill Benner  
 10/1 Northampton CG 4 T Gagnon+R Cloutier

### Aphrodite Fritillary

7/3 C Franklin NABA 2 Mark Fairbrother #  
 7/4 Moran WMA,Windsor 2 M Lynch+S Carroll  
 7/4 Mount Greylock 5 Cloutier #  
 7/10 Mount Greylock 6 Tom Gagnon #  
 7/10 N Worcester NABA 7 Carl Kamp  
 7/12 S Berkshire NABA 2 Renee Laubach  
 7/16 Blackstone Valley NABA 1 Tom Dodd #  
 7/24 Berkshire County 1 Bill Benner #  
 7/25 Royalston 1 Carl Kamp  
 8/21 Whately 1 Bill Benner  
 9/5 Royalston 3 Carl Kamp  
 9/11 Milford PL 1 Erik Nielsen

### Atlantis Fritillary

6/27 Cummington 3 Barbara Spencer  
 7/4 Moran WMA,Windsor 1 M Lynch+S Carroll  
 7/4 Mount Greylock 24 Cloutier #  
 7/10 Mount Greylock 16 Tom Gagnon #  
 7/21 Cummington 1 Barbara Spencer  
 7/24 Berkshire County 16 Bill Benner #

### Silver-bordered Fritillary

5/30 Belchertown 10 Bruce King  
 6/4 Whately 1 Bill Benner #  
 6/5 Cape Ann 3 Doug Savich  
 6/19 Cape Ann 32 Doug Savich  
 6/20 Warwick Rd PL,Royalston 2 Carl Kamp  
 6/25 Tully Dam,Royalston 2 S Moore+B Volke  
 6/26 S Quabbin 9 M Lynch+S Carroll  
 6/28 Cape Ann 11 Doug Savich  
 7/3 C Franklin NABA 32 Mark Fairbrother #  
 7/12 S Berkshire NABA 2 Renee Laubach  
 7/16 Northampton NABA 38 Dottie Case  
 7/23 Middleboro NABA 1 Karen Holmes  
 7/30 Cape Ann 300 Doug Savich  
 8/13 Appleton Farm,Ipswich 3 Sharon Stichter  
 8/14 FSWMA,Longmeadow 4 MBC(Gagnon+Parker)  
 8/18 Cape Ann 20 Doug Savich  
 8/23 AF,Hamilton/Ipswich 3 Sharon Stichter #

Massachusetts Butterflies No. 26, Spring 2006

© Copyright 2006 Massachusetts Butterfly Club. All rights reserved.

9/1 Plum Island 8 Sharon Stichter  
 9/5 Cape Ann 11 Doug Savich  
 9/11 Milford PL 3 Erik Nielsen  
 9/13 Plum Island 11 Sharon Stichter #  
 9/19 Waring Field,Rockport 20 Doug Savich  
 9/21 Cape Ann 37 Doug Savich  
 9/24 Umass Stadium,Amherst 1 Frank Model  
 10/1 Ballard Hill RA,Lancaster 1 Tom Murray  
 10/2 Cape Ann 4 Doug Savich

### Meadow Fritillary

5/17 Williamstown 1 Pam Weatherby  
 6/3 Graves Farm,Williamsburg 2 Bill Benner  
 6/25 Agawam Bk IBA,Stockbridge 1 M Lynch+S Carroll  
 7/4 Gill 12 Cloutier #  
 7/12 S Berkshire NABA 32 Renee Laubach  
 8/12 Whately 1 Bill Benner

### Harris' Checkerspot

6/19 BMBWS,Worcester 8 Barbara Walker  
 6/19 NCM,Petersham 10 MBC(Benner+Gagnon)  
 6/20 MBWMA,Newbury 7 Sharon Stichter  
 6/20 Tully Dam,Athol 10 Carl Kamp  
 6/20 Warwick Rd PL,Royalston 7 Carl Kamp  
 6/21 MBWMA,Newbury 10 Tom Murray  
 6/23 BFD,Hubbardston 11 Price+Barry+Mullen  
 6/25 MBWMA,Newbury 17 MBC(S Stichter)  
 6/25 Tully Dam,Royalston 10 S Moore+B Volke  
 6/26 NCM,Petersham 22 Erik Nielsen  
 6/26 Tully Dam,Royalston 10 Carl Kamp  
 6/28 MBWMA,Newbury 12 Sharon Stichter #

### Pearl Crescent

5/12 E Longmeadow 1 Karen Parker  
 5/15 Norcross WS,Monson 4 Elise Barry  
 5/18 CRPL,Chelmsford 1 Tom Whelan  
 5/28 Dauphinis Park,Grafton 15 Dolores Price  
 5/28 W Bridgewater 3 Don Adams  
 5/29 Delaney WMA,Stow 6 MBC(B. Walker)  
 5/30 Cummington 4 Barbara Spencer  
 5/30 Larkin RA,Northbridge 8 D Price+W Miller  
 5/30 Rutland SP 7 Elise Barry  
 6/1 TRPL,Chelmsford 11 Tom Whelan  
 6/3 Graves Farm,Williamsburg 6 Bill Benner  
 6/4 BMBWS,Worcester 7 MBC(Jo-Ann Mullen)  
 6/5 Cape Ann 23 Doug Savich  
 6/5 W Bridgewater 8 Don Adams  
 6/8 Bart's Cobble,Sheffield 7 Elise Barry  
 6/8 Stichter Yard,Newbury 13 Sharon Stichter  
 6/11 Graves Farm,Williamsburg 14 Bill Benner  
 6/11 WMWS,Princeton 7 S Moore+B Volke  
 6/12 Cape Ann 24 Doug Savich  
 6/24 MV SF 10 Allan Keith  
 7/19 Bristol NABA 19 Mark Mello #  
 7/21 Cummington 200 Barbara Spencer  
 7/21 MMP,Williamstown 20 Pam Weatherbee  
 7/23 Middleboro NABA 26 Karen Holmes  
 7/23 Milford PL 32 Erik Nielsen  
 7/24 Berkshire County 43 Bill Benner #  
 7/24 Cape Ann 77 Doug Savich  
 7/24 Gate 8,Boylston 11 MBC(Wendy Miller)  
 7/30 Cape Ann 1000 Doug Savich  
 7/30 Quabbin Park,Belchertown 52 M Lynch+S Carroll  
 7/30 World's End,Hingham 100 Bob Bowker  
 8/6 Leicester 68 MBC(D. Price)  
 8/6 Tower Hill,Boylston 22 Wendy Miller  
 8/8 Cape Ann 500 Doug Savich  
 8/13 Crane WMA,Falmouth 37 Alison Robb  
 8/20 Oxbow Nwr,Harvard 15 Tom Murray

9/1 Cape Ann 43 Doug Savich  
 9/10 Ware River Watershed 16 M Lynch+S Carroll  
 9/11 Cape Ann 16 Doug Savich  
 9/14 Cape Ann 24 Doug Savich  
 9/21 Cape Ann 56 Doug Savich  
 9/21 Oxbow Nwr,Harvard 15 Tom Murray  
 9/22 Whately 2 Bill Benner  
 9/27 Keith Farm,Chilmark 1 Allan Keith  
 10/5 Sudbury CG 3 Tom Murray  
 10/6 AP,Dartmouth 4 Tom Murray  
 10/8 Stichter Yard,Newbury 1 Sharon Stichter

### Baltimore Checkerspot

6/13 W Bridgewater 2 Don Adams  
 6/26 W Bridgewater 36 Don Adams  
 7/2 Williams Land,Harvard 50 Tom Murray #  
 7/3 C Franklin NABA 94 Mark Fairbrother #  
 7/3 MPR,W Newbury 27 Sharon Stichter #  
 7/10 MPR,W Newbury 54 Erik Nielsen  
 7/11 Ffolliott's Farm,Ipswich 2 Sissy Ffolliott  
 7/11 Williams Land,Harvard 24 Tom Whelan  
 7/12 S Berkshire NABA 119 Renee Laubach  
 7/16 Blackstone Valley NABA 18 Tom Dodd #  
 7/16 Falmouth NABA 6 Alison Robb #  
 7/16 MV NABA 10 Matt Pelikan  
 7/16 Northampton NABA 23 Dottie Case  
 7/21 MMP,Williamstown 1 Pam Weatherbee  
 7/22 Hinsdale 1 Barbara Spencer  
 7/23 Middleborough 1 Karen Holmes  
 7/23 W Bridgewater 2 Don Adams  
 7/24 Berkshire County 2 Bill Benner #  
 7/24 Williams Land,Harvard 4 S Moore+B Volke

### Question Mark

7/4 Tower Hill,Boylston 1 Wendy Miller  
 7/10 N Worcester NABA 1 Carl Kamp  
 7/13 Stichter Yard,Newbury 1 Sharon Stichter  
 7/16 Northampton NABA 1 Dottie Case  
 7/24 E Longmeadow 1 Karen Parker  
 7/28 Stichter Yard,Newbury 1 Sharon Stichter  
 8/4 Cummington 1 Barbara Spencer  
 10/1 Westborough WMA 1 M Lynch+S Carroll

### Eastern Comma

3/30 Granby 1 Bill Benner  
 3/30 Mount Tom State Res. 1 T Gagnon+B Callahan  
 4/5 Holliston 1 Richard Hildreth  
 4/5 IRWS,Topsfield 3 Fred Goodwin  
 4/7 E Longmeadow 2 Karen Parker  
 4/8 Moore Sp,Paxton 3 Randy Kuerzel  
 4/9 Tyringham 3 B+R+M Walker  
 4/10 Moore Sp,Paxton 4 Tom Gagnon+v.o.  
 4/14 Boxford 2 Jim Berry  
 4/26 IRWS,Topsfield 3 Fred Goodwin  
 5/9 Bike Path,Amherst 1 Ron+Sue Cloutier  
 5/11 Assabet River NWR,Stow 1 B Volke+S Moore  
 5/13 Whately 1 Bill Benner  
 5/28 Quaboag WMA,Brookfield 1 M Lynch+S Carroll  
 7/3 GMNWR,Concord 3 Jason Forbes  
 7/4 Gill 5 Cloutier #  
 7/10 Appleton Farm,Ipswich 2 Jim Berry  
 7/10 Mount Greylock 10 Tom Gagnon #  
 7/16 Northampton NABA 31 Dottie Case  
 8/14 FSWMA,Longmeadow 2 MBC(Gagnon+Parker)  
 9/5 Royalston 1 Carl Kamp  
 10/5 Sudbury CG 1 Tom Murray  
 10/30 Oxbow Nwr,Harvard 1 Tom Murray  
 10/30 Sudbury Res,Southborough 1 M Lynch+S Carroll

### Compton Tortoiseshell

3/25 Middleborough 1 South Shore Bird Club  
3/30 Cummington 1 Barbara Spencer  
3/30 New Salem 1 Ron+Sue Cloutier  
4/5 BFD,Hubbardston 1 Bart Kamp  
4/9 Assabet River NWR,Stow 1 Tom Murray  
4/9 Moore Sp,Paxton 1 Tom Gagnon+v.o.  
4/9 Mount Washington 1 M Lynch+S Carroll  
4/10 Assabet River NWR,Stow 2 S Moore+B Volke  
4/10 IRWS,Topsfield 6 Fred Goodwin  
5/2 Willowdale SF,Ipswich 1 Sissy Ffolliott  
5/9 Eastman Brook,Amherst 1 Ron+Sue Cloutier  
6/5 Mount Greylock 1 Mike Nelson  
7/3 Fowl Meadows,Milton 1 T Murray+E Nielsen  
7/4 Gill 1 Cloutier #  
7/10 Mount Greylock 12 Tom Gagnon #  
7/12 S Berkshire NABA 5 Renee Laubach  
7/15 IRWS,Topsfield 1 Fred Goodwin  
7/24 Berkshire County 1 Bill Benner #  
11/5 Cummington 1 Barbara Spencer

### Mourning Cloak

3/19 IRWS,Topsfield 1 Scott Santino  
3/29 E Longmeadow 1 Karen Parker  
3/30 Bald Hill Res.,Boxford 1 Jim Berry  
3/30 Granby 1 Bill Benner  
3/30 IRWS,Topsfield 2 Fred Goodwin  
3/30 Lexington 2 Tom Whelan  
3/30 Mount Tom State Res. 3 T Gagnon+B Callahan  
4/5 Holliston 2 Richard Hildreth  
4/5 IRWS,Topsfield 10 Fred Goodwin  
4/8 Moore Sp,Paxton 6 Randy Kuerzel  
4/9 Hatchville Woods,Falmouth 3 Alison Robb  
4/9 Moore Sp,Paxton 19 Tom Gagnon+v.o.  
4/9 Mount Washington 8 M Lynch+S Carroll  
4/9 Sheffield 8 M Lynch+S Carroll  
4/10 IRWS,Topsfield 29 Fred Goodwin  
4/10 Keith Farm,Chilmark 2 Allan Keith  
4/10 Lexington 4 Tom Whelan  
4/10 Moore Sp,Paxton 33 Tom Gagnon+v.o.  
4/17 Oxbow Nwr,Harvard 5 Erik Nielsen  
4/18 BMBWS,Worcester 3 Walker+Howe-Trenholm  
4/18 IRWS,Topsfield 27 Fred Goodwin  
4/18 Plum Island 2 Bill Gette  
5/3 Lamson Rd,Foxborough 1 M. Champagne  
5/5 Whately 1 Bill Benner  
5/9 New Salem 2 Ron+Sue Cloutier  
5/29 Delaney WMA,Stow 2 MBC(B. Walker)  
6/5 Mount Greylock 4 MBC(Benner+Gagnon)  
7/3 C Franklin NABA 14 Mark Fairbrother #  
7/10 Mount Greylock 10 Tom Gagnon #  
7/10 N Worcester NABA 12 Carl Kamp  
7/12 S Berkshire NABA 19 Renee Laubach  
7/21 Cummington 6 Barbara Spencer  
7/24 Berkshire County 8 Bill Benner #  
9/3 Boston Nature Center 1 Andrew Birch  
9/19 AP,Dartmouth 1 M. Champagne  
9/21 Sandisfield 1 Mark Rowden  
9/28 Cape Ann 1 Doug Savich  
10/30 Little's Farm,Newbury 1 S Moore+B Volke  
10/30 Oxbow Nwr,Harvard 2 Tom Murray  
10/30 Sudbury Res.,Southborough 1 M Lynch+S Carroll  
10/31 Squibnocket,Chilmark 1 Allan Keith  
11/6 Pittsfield 1 Tom Gagnon

### Milbert's Tortoiseshell

3/22 Charlemont 1 Jennifer Strules  
3/31 Florence 1 Tom Gagnon

4/8 Moore Sp,Paxton 1 Randy Kuerzel  
4/10 Concord 1 Simon Perkins  
4/17 HPM,Wobum 1 Marjory Rines  
4/19 Sherborn 1 M. Champagne  
5/30 Larkin RA,Northbridge 1 D Price+W Miller  
6/8 Bart's Cobble,Sheffield 1 Elise Barry  
6/11 Graves Farm,Williamsburg 1 Bill Benner  
6/13 Rowden Yard,Leicester 1 Mark Rowden  
6/17 Joppa Flats,NP 1 Sharon Stichter #  
6/19 Stichter Yard,Newbury 1 Sharon Stichter  
6/27 Cummington 1 Barbara Spencer  
7/2 Plainfield 1 M Lynch+S Carroll  
7/3 C Franklin NABA 6 Mark Fairbrother #  
7/4 Mount Greylock 4 Cloutier #  
7/12 S Berkshire NABA 3 Renee Laubach  
7/16 Blackstone Valley NABA 1 Tom Dodd #  
7/16 Northampton NABA 105 Dottie Case  
7/20 Mount Greylock 1 Andrew McGinnis  
7/21 MMP,Williamstown 2 Pam Weatherbee  
7/24 Berkshire County 4 Bill Benner #  
7/28 Stichter Yard,Newbury 26 Sharon Stichter  
8/4 Stichter Yard,Newbury 1 Sharon Stichter

### Lady Species

4/23 E Longmeadow 1 Karen Parker  
6/20 Holliston 1 Richard Hildreth  
10/2 AP,Dartmouth 15 Bob Bowker  
10/2 Gooseberry Neck,Westport 15 Bob Bowker

### American Lady

4/17 E Bridgewater 1 Eddie Giles  
4/18 Pond,Chilmark 1 Allan Keith  
4/19 Stichter Yard,Newbury 1 Sharon Stichter  
4/26 Essex County 2 Sharon Stichter #  
5/3 IRWS,Topsfield 1 Fred Goodwin  
5/3 Lamson Rd,Foxborough 2 M. Champagne  
5/10 Lamson Rd,Foxborough 3 M. Champagne  
5/13 Whately 2 Bill Benner  
5/17 Stichter Yard,Newbury 4 S Stichter  
5/28 Chappaquidic,Edgartown 2 Allan Keith  
5/28 Nahant 3 D. Saffarewich  
6/1 LF/JF,Newbury/NP 3 Sharon Stichter  
6/1 Nomans Island,Chilmark 4 Allan Keith  
6/4 GBH,Canton 3 M. Champagne  
6/7 Dauphinais Park,Grafton 2 Price+Barry+Mullen  
6/8 Keith Farm,Chilmark 2 Allan Keith  
6/10 Stichter Yard,Newbury 3 Sharon Stichter  
7/16 Tisbury 13 Allan Keith  
7/18 Nomans Island,Chilmark 5 Allan Keith  
7/23 Milford PL 4 Erik Nielsen  
7/24 Stichter Yard,Newbury 3 Sharon Stichter  
7/29 Tuckernuck Island 15 Matt Pelikan  
8/21 Northampton CG 1 Bill Benner+VO  
9/3 AP,Dartmouth 3 Nielsen+Raymond  
9/10 Sylvan Nursery,Westport 7 Erik Nielsen  
9/11 Wayland CG 5 S Moore+B Volke  
9/14 Wayland CG 4 Tom Whelan  
9/19 Chappaquidic,Edgartown 6 Allan Keith  
9/21 Eastern Point,Gloucester 9 Doug Savich  
9/24 Gooseberry Neck,Westport 2 Brian Cassie  
10/1 Northampton CG 3 T Gagnon+R Cloutier  
10/19 AP,Dartmouth 2 M. Champagne  
10/20 Cape Ann 4 Doug Savich  
11/5 Head Of The Meadow,Truro 1 M Lynch+S Carroll  
11/5 Highland Light,Truro 1 M Lynch+S Carroll

### Painted Lady

4/18 Holliston 1 Richard Hildreth  
5/15 MSSSF,Plymouth 1 MBC(Murray+Nielsen)

Massachusetts Butterflies No. 26, Spring 2006

© Copyright 2006 Massachusetts Butterfly Club. All rights reserved.

5/28	W Bridgewater	1 Don Adams	11/5	Truro Bike Path	1 M Lynch+S Carroll
5/29	MSSF,Plymouth	5 Tom Murray	11/12	Gooseberry Neck,Westport	2 M Lynch+S Carroll
5/30	HVD,Oxford	1 Barbara Walker	<b>Common Buckeye</b>		
6/3	Whately	1 Bill Benner	9/4	S Monomoy	1 Blair Nikula
6/4	BMBWS,Worcester	1 MBC(J. Mullen)	9/16	Keith Farm,Chilmark	1 Allan Keith
6/8	Bart's Cobble,Sheffield	1 Elise Barry	9/19	Chappaquidic,Edgartown	1 Allan Keith
6/9	Stichter Yard,Newbury	1 Sharon Stichter	10/2	Gooseberry Neck,Westport	1 Bob Bowker
6/18	GBH,Canton	3 Bob Bowker	10/6	AP,Dartmouth	1 Tom Murray
6/25	MBWMA,Newbury	4 MBC(S Stichter)	10/31	Squibnocket,Chilmark	1 Allan Keith
7/10	Little's Farm,Newbury	7 Erik Nielsen	<b>Red-spotted Admiral</b>		
7/12	Dauphinis Park,Grafton	5 Dolores Price #	6/11	Rowden Yard,Leicester	1 Mark Rowden
7/16	Falmouth NABA	50 Alison Robb #	6/18	GBH,Canton	1 Bob Bowker
7/16	Northampton NABA	31 Dottie Case	6/19	Tom Swamp,Petersham	2 MBC(Benner+Gagnon)
7/23	W Bridgewater	3 Don Adams	6/20	Royalston	1 Carl Kamp
7/29	Tuckermuck Island	1 Matt Pelikan	6/24	BFD,Hubbardston	1 Dolores Price #
8/3	Haley Yard,Marblehead	10 Karen Haley	6/24	Tom Swamp,Petersham	1 Tom Murray
8/20	MNWRH,Chatham	6 Blair Nikula	6/26	Tully Dam,Athol	2 Carl Kamp
8/21	Northampton CG	6 Bill Benner+VO	7/4	N Adams	1 Cloutier #
8/31	MV	14 Matt Pelikan	7/5	Sherborn PL	1 M. Champagne#
9/3	N Monomoy	6 B Nikula+J Trimble	7/10	IRWS,Topsfield	2 Fred Goodwin #
9/3	Wayland CG	12 Steve Moore+V.O.	7/24	Berkshire County	3 Bill Benner #
9/5	AP,Dartmouth	9 Erik Nielsen	7/29	Rowden Yard,Leicester	1 Mark Rowden
9/10	Sylvan Nursery,Westport	16 Erik Nielsen	<b>White Admiral</b>		
9/11	Nantucket	3 Bill Benner	6/11	Cummington	2 Barbara Spencer
9/21	Eastern Point,Gloucester	56 Doug Savich	6/12	Hadley	1 Bill Benner #
9/21	Moore Sp,Paxton	14 Elise Barry	6/19	Tom Swamp,Petersham	1 MBC(Benner+Gagnon)
9/24	Gooseberry Neck,Westport	90 Brian Cassie	6/20	Royalston	1 Carl Kamp
9/24	Sylvan Nursery,Westport	42 Brian Cassie	6/24	High Ledges WS,Shelburne	1C. Kamp+Alyce Mayo
9/27	MV	30 Allan Keith	6/25	Tom Swamp,Petersham	2 S Moore+B Volke
9/28	Cape Ann	49 Doug Savich	7/2	Bog,Hawley	2 M Lynch+S Carroll
10/1	Northampton CG	T Gagnon+R Cloutier	7/3	C Franklin NABA	2 Mark Fairbrother #
10/2	Horseneck Beach,Westport	72 Brian Cassie	7/4	Cheshire	1 M Lynch+S Carroll
10/6	AP,Dartmouth	12 Tom Murray	7/4	Gill	4 Cloutier #
10/19	AP,Dartmouth	8 M. Champagne	7/4	Moran WMA,Windsor	4 M Lynch+S Carroll
10/21	Cape Ann	2 Doug Savich	7/4	Mount Greylock	8 Cloutier #
10/27	MV	1 Matt Pelikan	7/10	Mount Greylock	14 Tom Gagnon #
10/30	Haley Yard,Marblehead	2 Karen Haley	7/16	Northampton NABA	3 Dottie Case
11/1	Easthampton	1 Bruce King	7/21	Cummington	1 Barbara Spencer
11/1	Squibnocket,Chilmark	1 Allan Keith	7/21	MMP,Williamstown	1 Pam Weatherbee
<b>Red Admiral</b>			7/24	Berkshire County	2 Bill Benner #
4/10	Warwick	1 Susan Heinricher	7/29	Stichter Yard,Newbury	1 Sharon Stichter
4/21	Woods Hole	1 Alison Robb	<b>Red-spotted Purple</b>		
4/26	Essex County	1 Sharon Stichter #	6/11	E Longmeadow	1 Karen Parker
5/2	Fowl Meadows,Milton	1 Paula Chasan	6/11	GBH,Canton	1 Erik Nielsen
5/3	Old Town Hill,Newbury	3 Bill Gette	6/11	Graves Farm,Williamsburg	3 Bill Benner
5/5	Quabbin Park,Belchertown	1 Dave Small	6/11	Sherborn PL	1 Bob Bowker
5/9	E Longmeadow	1 Karen Parker	6/12	MBWMA,Newbury	3 B Volkle+S Moore
5/10	Newbury	2 Sharon Stichter	6/19	Tom Swamp,Petersham	6 MBC(Benner+Gagnon)
5/17	Worcester	1 Dan Mushrush	6/23	BFD,Hubbardston	1 Price+Barry+Mullen
5/30	Larkin RA,Northbridge	2 D Price+W Miller	6/24	E Longmeadow	1 Karen Parker
6/6	Oxbow Nwr,Harvard	2 Erik Nielsen	6/24	High Ledges WS,Shelburne	2 C. Kamp+A. Mayo
7/3	C Franklin NABA	5 Mark Fairbrother #	6/24	MV SF	6 Allan Keith
7/4	Gill	2 Cloutier #	6/25	New Marlborough	9 M Lynch+S Carroll
7/10	Mount Greylock	2 Tom Gagnon #	6/25	Tom Swamp,Petersham	12 S Moore+B Volke
7/12	Dauphinis Park,Grafton	4 Dolores Price #	7/4	Mount Greylock	12 Cloutier #
7/23	Middleborough	1 Karen Holmes	7/21	Cummington	1 Barbara Spencer
7/29	Bussey Brook Prop.,Boston	2 Betty Wright	7/24	Berkshire County	6 Bill Benner #
7/29	Tuckermuck Island	1 Matt Pelikan	8/6	Tower Hill,Boylston	1 Wendy Miller
9/11	Gooseberry Neck,Westport	2 Barbara Walker	8/12	Old House Pond,W Tisbury	1 Allan Keith
9/19	Chappaquidic,Edgartown	2 Allan Keith	8/25	Stichter Yard,Newbury	1 Sharon Stichter
10/18	Boston Nature Center	2 Andrew Birch	8/28	W Bridgewater	2 Don Adams
10/27	Nahant	2 Dorothy	9/11	Nantucket	3 Bill Benner
Saffarewich			9/17	Mount Tom State Res.	1 Tom Gagnon
10/30	Haley Yard,Marblehead	1 Karen Haley	<b>Viceroy</b>		
10/31	Squibnocket,Chilmark	1 Allan Keith	6/3	Lamson Rd,Foxborough	1 M. Champagne
11/1	Falmouth	1 Alison Robb			
11/4	Chilmark	1 Allan Keith			

6/5	HPM,Wobum	1 Betty Wright	7/10	N Worcester NABA	6 Carl Kamp
6/11	Cummington	1 Barbara Spencer	7/11	Cape Ann	1 Doug Savich
6/11	Graves Farm,Williamsburg	2 Bill Benner	7/12	S Berkshire NABA	6 Renee Laubach
6/11	Sherborn PL	3 Bob Bowker	7/16	Blackstone Valley NABA	8 Tom Dodd #
6/12	MBWMA,Newbury	3 S Moore+B Volke	7/16	Hoft Farm,W Tisbury	4 Allan Keith
6/25	MBWMA,Newbury	6 MBC(S Stichter)	7/16	Northampton NABA	3 Dottie Case
6/25	NCM,Petersham	1 S Moore+B Volke	7/17	Cape Ann	2 Doug Savich
7/24	Berkshire County	2 Bill Benner #	7/19	Bristol NABA	5 Mark Mello #
7/24	Gate 8,Boylston	MBC(Wendy Miller)	7/22	Hinsdale	1 Barbara Spencer
7/26	LF/JF,Newbury/NP	2 Sharon Stichter #	7/25	Sherborn PL	2 Bob Bowker
8/6	Leicester	7 MBC(D. Price)	7/28	Cape Ann	3 Doug Savich
8/27	MBWMA,Newbury	7 Erik Nielsen	8/6	Leicester	1 MBC(D. Price)
9/5	Dauphinis Park,Grafton	3 Dolores Price	8/13	FSWMA,Longmeadow	11 Erik Nielsen
9/10	Sylvan Nursery,Westport	2 Erik Nielsen			
9/13	Granby	3 Carl Kamp			
9/14	Wayland CG	2 Tom Whelan			
9/24	Umass Stadium,Amherst	1 Frank Model			
10/1	Ballard Hill RA,Lancaster	1 Tom Murray			
10/1	Sudbury CG	1 S Moore+B Volke			
10/2	Wayland CG	1 Nielsen+T Murray			
	<b>Hackberry Emperor</b>				
7/23	Springfield	6 Tom Gagnon			
8/13	Sheffield	2 M Lynch+S Carroll			
8/14	Forest Park,Springfield	2 MBC(Gagnon+Parker)			
	<b>Tawny Emperor</b>				
7/12	S Berkshire NABA	1 Renee Laubach			
7/16	Northampton NABA	1 Dottie Case			
7/30	Northampton CG	2 Tom Gagnon			
8/2	Northampton CG	1 Dottie Case			
8/5	Northampton CG	1 Bill Benner			
8/13	Forest Park,Springfield	1 Erik Nielsen			
8/21	Northampton CG	1 Bill Benner+VO			
	<b>Northern Pearly-Eye</b>				
7/3	C Franklin NABA	2 Mark Fairbrother #			
7/4	BMBWS,Worcester	2 Barbara Walker			
7/10	MPRA,W Newbury	1 Erik Nielsen			
7/10	N Worcester NABA	1 Carl Kamp			
7/12	S Berkshire NABA	3 Renee Laubach			
7/16	Blackstone Valley NABA	1 Tom Dodd #			
7/16	Northampton NABA	1 Dottie Case			
7/21	MMP,Williamstown	1 Pam Weatherbee			
7/24	Berkshire County	2 Bill Benner #			
7/25	Royalston	1 Carl Kamp			
	<b>Brown (spp)</b>				
7/4	Ipswich	1 Jim Berry			
	<b>Eyed Brown</b>				
6/26	Tom Swamp,Petersham	3 Erik Nielsen			
7/3	C Franklin NABA	5 Mark Fairbrother #			
7/3	Fowl Meadows,Milton	1 T Murray+E Nielsen			
7/4	Cheshire	1 M Lynch+S Carroll			
7/4	Moran WMA,Windsor	1 M Lynch+S Carroll			
7/4	N Adams	20 Cloutier #			
7/10	MBWMA,Newbury	8 Sharon Stichter #			
7/10	Mount Greylock	2 Tom Gagnon #			
7/12	MBWMA,Newbury	12 Sharon Stichter #			
7/16	Blackstone Valley NABA	1 Tom Dodd #			
7/16	Hoft Farm,W Tisbury	1 Allan Keith			
7/16	Northampton NABA	2 Dottie Case			
7/16	Rowden Yard,Leicester	1 Mark Rowden			
7/16	Wampesket,Tisbury	5 Allan Keith			
	<b>Appalachian Brown</b>				
6/26	Quabbin Park,Belchertown	1 M Lynch+S Carroll			
7/3	C Franklin NABA	4 Mark Fairbrother #			
7/10	N Essex NABA	6 Fred Goodwin #			
5/21	E Longmeadow	2 Karen Parker			
6/3	Graves Farm,Williamsburg	2 Bill Benner			
6/4	E Longmeadow	8 Karen Parker			
6/4	Lamson Rd,Foxborough	7 M. Champagne			
6/5	Shrewsbury PL	19 S Moore+B Volke			
6/7	Dauphinis Park,Grafton	12 Price+Barry+Mullen			
6/9	Keith Farm,Chilmark	3 Allan Keith			
6/11	Lamson Rd,Foxborough	35 Erik Nielsen			
6/11	Sherborn PL	50 Bob Bowker			
6/11	WMWS,Princeton	20 S Moore+B Volke			
6/12	Crane WMA,Falmouth	46 Alison Robb			
6/12	Ffolliott's Farm,Ipswich	15 Sharon Stichter			
6/19	BMBWS,Worcester	10 Barbara Walker			
6/24	MV SF	10 Allan Keith			
7/3	E Longmeadow	10 Karen Parker			
7/25	Cape Ann	1 Doug Savich			
7/25	Sherborn PL	20 Bob Bowker			
7/29	Tuckermuck Island	1 Matt Pelikan			
7/30	Rowden Yard,Leicester	6 Mark Rowden			
8/2	E Longmeadow	1 Karen Parker			
8/7	Stichter Yard,Newbury	2 Sharon Stichter			
	<b>Common Ringlet</b>				
5/15	Norcross WS,Monson	1 Elise Barry			
5/27	Rowden Yard,Leicester	1 Mark Rowden			
5/28	Quabog WMA,Brookfield	1 M Lynch+S Carroll			
5/29	Florence	1 Tom Gagnon			
5/30	E Longmeadow	1 Karen Parker			
6/2	CRPL,Chelmsford	3 Tom Whelan			
6/3	Graves Farm,Williamsburg	40 Bill Benner			
6/5	Little's Farm,Newbury	6 Sharon Stichter #			
6/5	Mount Greylock	4 MBC(Benner+Gagnon)			
6/7	Dauphinis Park,Grafton	14 Price+Barry+Mullen			
6/8	Bart's Cobble,Sheffield	17 Elise Barry			
6/10	CRPL,Chelmsford	25 Tom Whelan			
6/11	Graves Farm,Williamsburg	120 Bill Benner			
6/11	WMWS,Princeton	134 S Moore+B Volke			
6/12	Crane WMA,Falmouth	12 Alison Robb			
6/12	Ffolliott's Farm,Ipswich	25 Sharon Stichter			
6/12	Mount Greylock	82 M Lynch+S Carroll			
6/20	Landfill,Worcester	150 M Lynch+S Carroll			
6/20	Royalston	65 Carl Kamp			
6/23	BFD,Hubbardston	146 Price+Barry+Mullen			
7/30	World's End,Hingham	150 Bob Bowker			
8/13	Sheffield	40 M Lynch+S Carroll			
8/21	Miller's Rvr WMA,Royalston	35 Carl Kamp			
8/23	AF,Hamilton/Ipswich	30 Sharon Stichter #			
8/26	Worcester Airport	20 M Lynch+S Carroll			
9/1	GBH,Canton	4 Tom Murray			
9/2	Northampton CG	2 Bill Benner			
9/3	Boston Nature Center	1 Andrew Birch			
9/4	W Newbury	2 Sharon Stichter			
9/7	Cape Ann	1 Doug Savich			

Massachusetts Butterflies No. 26, Spring 2006

© Copyright 2006 Massachusetts Butterfly Club. All rights reserved.

9/10 Ware River Watershed 30 M Lynch+S Carroll  
 9/12 WMWS,Princeton 2 Barbara Walker

### Common Wood-Nymph

7/3 Mount Tom State Res. 1 Bruce King  
 7/10 E Longmeadow 1 Karen Parker  
 7/10 MBWMA,Newbury 1 Sharon Stichter #  
 7/10 Mount Greylock 17 Tom Gagnon #  
 7/12 S Berkshire NABA 848 Renee Laubach  
 7/16 MV 25 Allan Keith  
 7/17 Crane WMA,Falmouth 32 Alison Robb  
 7/20 E Longmeadow 6 Karen Parker  
 7/20 Nomans Island,Chilmark 2 Allan Keith  
 7/21 MMP,Williamstown 9 Pam Weatherbee  
 7/23 AP,Dartmouth 12 M Lynch+S Carroll  
 7/24 Berkshire County 50 Bill Benner #  
 7/24 Cape Ann 123 Doug Savich  
 7/24 E Longmeadow 18 Karen Parker  
 7/25 Sherborn PL 20 Bob Bowker  
 7/30 Cape Ann 300 Doug Savich  
 8/6 Leicester 49 MBC(D. Price)  
 8/7 Ipswich 40 Jim Berry  
 8/8 Cape Ann 500 Doug Savich  
 8/8 Plum Island 699 M Lynch+S Carroll  
 8/17 Plum Island 40 Sharon Stichter  
 8/25 Cape Ann 26 Doug Savich  
 9/2 Northampton CG 1 Bill Benner  
 9/4 F&G Fields,Westborough 2 S Moore+B Volke  
 9/5 Dauphinis Park,Grafton 1 Dolores Price  
 9/5 Royalston 3 Carl Kamp  
 9/12 WMWS,Princeton 3 Barbara Walker  
 9/14 Cape Ann 1 Doug Savich  
 9/19 Gay Head 1 Allan Keith

### Monarch

5/19 Wyman Woods,Marblehead 1 Karen Haley  
 6/1 W Bridgewater 2 Don Adams  
 6/8 Bart's Cobble,Sheffield 1 Elise Barry  
 6/11 Stichter Yard,Newbury 1 Sharon Stichter  
 7/2 IRWS,Topsfield 1 Bob Speare #  
 7/3 Brookwood Farm,Canton 1 M. Champagne  
 7/10 Ipswich 10 Jim Berry #  
 7/13 Truro NABA 4 Tor Hansen #  
 7/16 Northampton NABA 30 Dottie Case  
 7/18 W Bridgewater 3 Don Adams  
 7/19 Wilbraham 5 Roger Pease  
 7/23 Middleboro NABA 9 Karen Holmes  
 7/29 Tuckermuck Island 10 Matt Pelikan  
 7/30 World's End,Hingham 25 Bob Bowker  
 8/6 Keith Farm,Chilmark 5 Allan Keith  
 8/8 Plum Island 6 M Lynch+S Carroll  
 8/9 Katama,Edgartown 3 Allan Keith  
 8/13 FSWMA,Longmeadow 13 Erik Nielsen  
 8/13 Petersham 9 Earle Baldwin  
 8/15 Templeton 12 Earle Baldwin  
 8/21 Miller's Rvr WMA,Royalston 16 Carl Kamp  
 9/3 Northampton CG 20 Tom Gagnon  
 9/8 Nantucket 3 Bill Benner  
 9/13 Granby 15 Carl Kamp  
 9/19 AP,Dartmouth 124 M. Champagne  
 9/21 Moore Sp,Paxton 212 Elise Barry  
 9/22 Eastern Point,Gloucester 101 D Savich+C Tibbits  
 9/28 Cape Ann 700 Doug Savich  
 10/1 Eastern Point,Gloucester 200 Doug Savich  
 10/2 Gooseberry Neck,Westport 370 Bob Bowker  
 10/2 Horseneck Beach,Westport 822 Brian Cassie  
 10/19 AP,Dartmouth 56 M. Champagne  
 10/20 Cape Ann 44 Doug Savich

10/30 Plum Island 1 S Moore+B Volke  
 11/1 Westport 2 Jo-anne Mullen  
 11/3 Squibnocket,Chilmark 3 Allan Keith  
 11/5 Gay Head 1 Allan Keith  
 11/5 Truro Bike Path 2 M Lynch+S Carroll  
 11/6 Pittsfield 6 Tom Gagnon  
 11/13 Sutton 1 M Lynch+S Carroll

### Silver-spotted Skipper

6/7 Dauphinis Park,Grafton 1 Price+Barry+Mullen  
 6/8 Bart's Cobble,Sheffield 1 Elise Barry  
 6/9 Cummington 1 Barbara Spencer  
 6/9 Nahant 1 Dorothy Saffarewich  
 6/12 Florence 1 Bill Benner #  
 6/14 Chilmark 1 Allan Keith  
 6/18 Holliston 1 Richard Hildreth  
 6/19 BMBWS,Worcester 1 Barbara Walker  
 6/20 E Longmeadow 1 Karen Parker  
 6/23 BFD,Hubbardston 3 Price+Barry+Mullen  
 6/25 MBWMA,Newbury 3 MBC(S Stichter)  
 7/2 Paine Estate,Waltham 6 Jason Forbes  
 7/2 Polly Hill,W Tisbury 10 Allan Keith  
 7/3 C Franklin NABA 62 Mark Fairbrother #  
 7/3 Prospect Hill,Waltham 10 Jason Forbes  
 7/4 BMBWS,Worcester 6 Barbara Walker  
 7/4 Gill 6 Cloutier #  
 7/4 Mount Greylock 2 Cloutier #  
 7/10 Cherry Hill Res,W Newbury 21 Erik Nielsen  
 7/10 IRWS,Topsfield 20 Fred Goodwin #  
 7/10 N Worcester NABA 113 Carl Kamp  
 7/24 G35,Wachusets Res 34 MBC(Wendy Miller)  
 8/6 Leicester 25 MBC(D. Price)  
 8/14 FSWMA,Longmeadow 4 MBC(Gagnon+Parker)  
 9/3 Boston Nature Center 5 Andrew Birch  
 9/5 Royalston 2 Carl Kamp  
 9/10 Sylvan Nursery,Westport 1 Erik Nielsen  
 10/1 Northampton CG 1 T Gagnon+R Cloutier

### Long-tailed Skipper

9/4 Gloucester 1 Susan Hedman  
 9/18 Little's Farm,Newbury 1 S Moore+B Volke

### Hoary Edge

6/18 GBH,Canton 1 Bob Bowker  
 6/25 HPM,Wobum 1 Bob Bowker  
 7/2 HPM,Wobum 5 MBC(Marj Rines)  
 7/3 C Franklin NABA 1 Mark Fairbrother #  
 7/3 GBH,Canton 4 MBC(Murray+Nielsen)  
 7/4 BMBWS,Worcester 1 Barbara Walker  
 7/12 GBH,Canton 1 M. Champagne  
 7/12 HPM,Wobum 1 Renee LaFontaine  
 7/24 GBH,Canton 1 Erik Nielsen

### Southern Cloudywing

6/11 Lamson Rd,Foxborough 2 Erik Nielsen  
 6/12 MBWMA,Newbury 1 B Volkle+S Moore  
 6/18 GBH,Canton 1 Bob Bowker  
 7/2 HPM,Wobum 5 MBC(Marj Rines)  
 7/3 C Franklin NABA 11 Mark Fairbrother #  
 7/3 Crane WMA,Falmouth 1 Alison Robb  
 7/3 GBH,Canton 3 MBC(Murray+Nielsen)  
 7/10 N Worcester NABA 2 Carl Kamp  
 7/12 GBH,Canton 2 M. Champagne  
 7/12 MBWMA,Newbury 1 Sharon Stichter #  
 7/16 Blackstone Valley NABA 1 Tom Dodd #  
 7/16 Falmouth NABA 2 Alison Robb #

### Northern Cloudywing

5/30 HVD,Oxford 1 Barbara Walker  
 6/5 HPM,Wobum 1 Betty Wright

6/5 Shrewsbury PL 2 S Moore+B Volke  
 6/7 Cape Ann 2 Doug Savich  
 6/7 Dauphinis Park,Grafton 4 Price+Barry+Mullen  
 6/9 Whately 1 Bill Benner  
 6/11 GBH,Canton 8 Erik Nielsen  
 6/11 Lamson Rd,Foxborough 3 Erik Nielsen  
 6/18 GBH,Canton 2 Bob Bowker  
 6/20 Royalston 17 Carl Kamp  
 6/22 Cape Ann 1 Doug Savich  
 6/25 HPM,Wobum 2 Bob Bowker  
 7/3 GBH,Canton 2 MBC(Murray+Nielsen)  
 7/10 Worcester NABA 3 Carl Kamp  
 7/15 HPM,Wobum 1 Tom Whelan

### Duskywing (spp)

5/17 Newbury 9 Jim Berry  
 6/25 MBWMA,Newbury 1 Sharon Stichter  
 7/15 HPM,Wobum 5 Tom Whelan  
 7/26 16 Acres GC,Springfield 1 Roger Pease

### Dreamy Duskywing

5/9 New Salem 2 Ron+Sue Cloutier  
 5/13 Whately 1 Bill Benner  
 5/17 Lamson Rd,Foxborough 2 M. Champagne  
 5/18 CRPL,Chelmsford 1 Tom Whelan  
 5/20 Lamson Rd,Foxborough 4 Tom Whelan  
 5/28 Dauphinis Park,Grafton 2 Dolores Price  
 5/28 KWPLM,Lexington 1 Tom Whelan  
 5/29 Delaney WMA,Stow 2 MBC(B. Walker)  
 5/30 Cummington 4 Barbara Spencer  
 5/30 HVD,Oxford 2 Barbara Walker  
 5/30 Larkin RA,Northbridge 1 D Price+W Miller  
 6/4 NP 1 Sharon Stichter  
 6/4 Ware River Watershed 4 M Lynch+S Carroll  
 6/5 Mount Greylock 13 MBC(Benner+Gagnon)  
 6/12 MBWMA,Newbury 2 B Volke+S Moore  
 6/20 MBWMA,Newbury 1 Sharon Stichter  
 6/26 NCM,Petersham 1 Erik Nielsen  
 6/28 MBWMA,Newbury 1 Sharon Stichter #

### Sleepy Duskywing

5/5 MV SF 3 Allan Keith  
 5/15 MSSF,Plymouth 12 MBC(Murray+Nielsen)  
 5/28 Lamson Rd,Foxborough 2 M. Champagne  
 5/29 MSSF,Plymouth 10 Tom Murray  
 6/5 Shrewsbury PL 1 S Moore+B Volke  
 6/7 Cape Ann 1 Doug Savich

### Juvenal's Duskywing

5/5 Lamson Rd,Foxborough 1 M. Champagne  
 5/5 MV SF 20 Allan Keith  
 5/5 TRPL,Chelmsford 2 Tom Whelan  
 5/5 Whately 2 Bill Benner  
 5/11 Assabet River NWR,Stow 1 B Volke+S Moore  
 5/11 Cape Ann 1 Doug Savich  
 5/11 HPM,Wobum 3 Tom Whelan  
 5/12 E Longmeadow 1 Karen Parker  
 5/15 MSSF,Plymouth 20 MBC(Murray+Nielsen)  
 5/15 Norcross WS,Monson 3 Elise Barry  
 5/19 Lamson Rd,Foxborough 3 M. Champagne  
 5/28 Dauphinis Park,Grafton 2 Dolores Price  
 5/29 Delaney WMA,Stow 9 MBC(B. Walker)  
 5/29 Florence 2 Tom Gagnon  
 5/30 HVD,Oxford 6 Barbara Walker  
 5/30 Larkin RA,Northbridge 2 D Price+W Miller  
 5/30 Rutland SP 13 Elise Barry  
 6/4 BMBWS,Worcester 3 MBC(J. Mullen)  
 6/4 Ware River Watershed 20 M Lynch+S Carroll  
 6/11 Hale Res,Westwood 4 Erik Nielsen

6/12 Hadley 1 Bill Benner #  
 6/19 NCM,Petersham 2 MBC(Benner+Gagnon)  
 6/21 Rowden Yard,Leicester 1 Mark Rowden  
 6/24 BFD,Hubbardston 1 Dolores Price #  
 6/24 High Ledges WS,Shelburne 1 C. Kamp+A. Mayo  
 7/19 Bristol NABA 1 Mark Mello #

### Horace's Duskywing

5/15 MSSF,Plymouth 1 MBC(Murray+Nielsen)  
 5/17 Uxbridge 1 Russ Holden  
 5/29 MSSF,Plymouth 1 Tom Murray  
 7/16 Blackstone Valley NABA 1 Tom Dodd #  
 7/19 Bristol NABA 3 Mark Mello #  
 7/23 GBH,Canton 7 Erik Nielsen  
 7/23 Milford PL 2 Erik Nielsen  
 7/30 World's End,Hingham 1 Bob Bowker  
 8/28 GBH,Canton 2 Erik Nielsen

### Wild Indigo Duskywing

5/28 Dauphinis Park,Grafton 1 Dolores Price  
 5/28 Lamson Rd,Foxborough 1 M. Champagne  
 5/29 Delaney WMA,Stow 8 MBC(B. Walker)  
 5/29 MSSF,Plymouth 1 Tom Murray  
 5/30 HVD,Oxford 3 Barbara Walker  
 6/2 CRPL,Chelmsford 2 Tom Whelan  
 6/3 Lamson Rd,Foxborough 3 M. Champagne  
 6/5 Shrewsbury PL 1 S Moore+B Volke  
 6/6 Delaney WMA,Stow 28 Erik Nielsen  
 6/12 Crane WMA,Falmouth 2 Alison Robb  
 7/23 GBH,Canton 21 Erik Nielsen  
 7/23 Milford PL 14 Erik Nielsen  
 7/24 Gate 8,Boylston 19 MBC(W. Miller)  
 7/31 W Bridgewater 14 Don Adams  
 8/2 BMBWS,Worcester 1 Dolores Price  
 8/5 Northampton CG 1 Bill Benner  
 8/13 Crane WMA,Falmouth 10 Alison Robb  
 9/5 Northampton CG 6 S Moore+B Volke  
 9/18 Northampton CG 5 MBC(T. Gagnon)  
 9/19 Joppa Flats,NP 1 Sharon Stichter  
 10/1 Northampton CG 2 T Gagnon+R Cloutier  
 10/2 Marlborough 4 Steve Moore

### Persius Duskywing

5/29 MSSF,Plymouth 1 Tom Murray

### Common Checkered-Skipper

9/18 Northampton CG 1 MBC(T. Gagnon)  
 9/19 Northampton CG 1 Tom Gagnon  
 9/21 Northampton CG 1 Tom Gagnon

### Common Sootywing

5/28 Dauphinis Park,Grafton 2 Dolores Price  
 5/29 Delaney WMA,Stow 9 MBC(B. Walker)  
 5/29 Florence 1 Tom Gagnon  
 6/7 Dauphinis Park,Grafton 4 Price+Barry+Mullen  
 7/16 Northampton NABA 106 Dottie Case  
 7/23 Milford PL 2 Erik Nielsen  
 7/24 Williams Land,Harvard 2 S Moore+B Volke  
 9/2 Northampton CG 25 Bill Benner  
 9/3 Wayland CG 2 Steve Moore+V.O.  
 9/5 Northampton CG 4 S Moore+B Volke  
 9/6 Boston Nature Center 1 Andrew Birch  
 9/18 Northampton CG 1 MBC(T. Gagnon)

### Arctic Skipper

6/4 Royalston 1 Carl Kamp  
 6/5 Moran WMA,Windsor 18 MBC(Benner+Gagnon)

### Least Skipper

6/7 Dauphinis Park,Grafton 1 Price+Barry+Mullen  
 6/8 Bart's Cobble,Sheffield 1 Elise Barry

6/12	Keith Farm,Chilmark	1 Allan Keith
6/20	Keith Farm,Chilmark	5 Allan Keith
6/20	MBWMA,Newbury	2 Sharon Stichter
6/28	MBWMA,Newbury	5 Sharon Stichter #
7/2	IRWS,Topsfield	25 Bob Speare #
7/2	Williams Land,Harvard	2 Tom Murray #
7/3	Fowl Meadows,Milton	4 T Murray+E Nielsen
7/12	S Berkshire NABA	19 Renee Laubach
7/18	Nomans Island,Chilmark	3 Allan Keith
8/4	Stichter Yard,Newbury	12 Sharon Stichter
8/5	Northampton CG	18 Bill Benner
8/6	Leicester	12 MBC(D. Price)
8/6	Stichter Yard,Newbury	25 Sharon Stichter
8/13	Sheffield	10 M Lynch+S Carroll
8/14	FSWMA,Longmeadow	50 MBC(Gagnon+Parker)
8/17	Parker River NWR Hq,NP	16 Sharon Stichter
8/22	Keith Farm,Chilmark	5 Allan Keith
8/23	AF,Hamilton/Ipswich	50 Sharon Stichter #
8/28	Fowl Meadows,Milton	4 Erik Nielsen
9/2	Bolton Flats	5 Tom Murray
9/3	Gooseberry Neck,Westport	14 Nielsen+Raymond
9/18	W Meadows,Northampton	8 MBC(T. Gagnon)
9/19	Dunback Meadows, Lexington	1 Andrew Birch
9/21	Oxbow Nwr,Harvard	2 Tom Murray
9/27	Keith Farm,Chilmark	7 Allan Keith
10/1	Northampton CG	1 T Gagnon+R Cloutier
10/2	Wayland CG	1 Nielsen+T Murray

### European Skipper

6/11	Graves Farm,Williamsburg	7 Bill Benner
6/11	Sherborn PL	3 Bob Bowker
6/12	E Longmeadow	1 Karen Parker
6/18	GBH,Canton	80 Bob Bowker
6/20	E Longmeadow	19 Karen Parker
6/20	Landfill,Worcester	500 M Lynch+S Carroll
6/20	Royalston	55 Carl Kamp
6/23	BFD,Hubbardston	500 Price+Barry+Mullen
6/25	HPM,Wobum	65 Bob Bowker
6/25	MBWMA,Newbury	12 MBC(S Stichter)
6/25	New Marlborough	106 M Lynch+S Carroll
6/27	Cummington	30 Barbara Spencer
6/29	Cape Ann	65 Doug Savich
7/2	HPM,Wobum	45 MBC(Marj Rines)
7/3	C Franklin NABA	750 Mark Fairbrother #
7/3	GBH,Canton	4000 MBC(Murray+Nielsen)
7/3	Prospect Hill,Waltham	200 Jason Forbes
7/4	Moran WMA,Windsor	394 M Lynch+S Carroll
7/4	Tower Hill,Boylston	200 Wendy Miller
7/10	Appleton Farm,Ipswich	35 Jim Berry
7/10	Mount Greylock	160 Tom Gagnon #
7/10	N Worcester NABA	723 Carl Kamp
7/12	S Berkshire NABA	92 Renee Laubach
7/16	Blackstone Valley NABA	6 Tom Dodd #
7/16	MV NABA	94 Matt Pelikan
7/16	Northampton NABA	12 Dottie Case
7/21	Cummington	20 Barbara Spencer
7/23	Brewster NABA	1 Alison Robb #
7/23	Middleboro NABA	1 Karen Holmes
7/24	Berkshire County	17 Bill Benner #
7/24	GBH,Canton	2 Erik Nielsen
8/13	Appleton Farm,Ipswich	1 Sharon Stichter
8/13	Crane WMA,Falmouth	1 Alison Robb
8/16	Joppa Flats,NP	1 Sharon Stichter
8/21	AF,Hamilton/Ipswich	1 Sharon Stichter #

### Fiery Skipper

9/20	Waring Field,Rockport	1 Doug Savich
9/21	Cape Ann	1 Doug Savich

9/22	Waring Field,Rockport	1 D Savich+C Tibbits
10/1	Northampton CG	1 T Gagnon+R Cloutier
10/2	Amherst	4 Frank Model
10/3	Northampton CG	2 Tom Gagnon
10/3	Turners Falls	1 Mark Fairbrother
10/5	Northampton CG	2 Barbara Spencer
10/6	AP,Dartmouth	1 Tom Murray
10/6	Northampton CG	1 Tom Gagnon
10/7	Cape Ann	2 Doug Savich

### Leonard's Skipper

8/20	BMBWS,Worcester	2 B Volke+S Moore
8/27	E Longmeadow	1 Karen Parker
8/28	GBH,Canton	2 Erik Nielsen
9/2	Bolton Flats	4 Tom Murray
9/3	Dartmouth	1 E Nielsen+T Raymond
9/5	Royalston	3 Carl Kamp
9/8	Cape Ann	1 Doug Savich
9/10	Nantucket	11 Bill Benner
9/11	Milford PL	1 Erik Nielsen

### Cobweb Skipper

5/17	Uxbridge	1 Russ Holden
5/20	Lamson Rd,Foxborough	3 Tom Whelan
5/29	Florence	9 Tom Gagnon
5/29	MSSF,Plymouth	3 Tom Murray
5/30	Athol	6 Carl Kamp #
5/30	Lamson Rd,Foxborough	1 M. Champagne
6/4	BMBWS,Worcester	4 MBC(J. Mullen)
6/5	Sherborn PL	1 Bob Bowker
6/12	Mount Greylock	1 M Lynch+S Carroll

### Indian Skipper

6/11	GBH,Canton	2 Erik Nielsen
6/11	Sherborn PL	1 Bob Bowker
6/12	Hadley	1 Bill Benner #
6/25	New Marlborough	1 M Lynch+S Carroll
6/26	NCM,Petersham	1 Erik Nielsen
6/26	Tully Dam,Royalston	1 Carl Kamp

### Peck's Skipper

5/27	Rowden Yard,Leicester	1 Mark Rowden
5/28	Dauphinis Park,Grafton	2 Dolores Price
5/29	Florence	2 Tom Gagnon
5/30	E Longmeadow	1 Karen Parker
5/30	HVD,Oxford	1 Barbara Walker
6/3	Lamson Rd,Foxborough	1 M. Champagne
6/4	BMBWS,Worcester	9 MBC(J. Mullen)
6/4	E Longmeadow	10 Karen Parker
6/5	Little's Farm,Newbury	6 Sharon Stichter #
6/7	Dauphinis Park,Grafton	9 Price+Barry+Mullen
6/7	E Longmeadow	14 Karen Parker
6/9	E Longmeadow	19 Karen Parker
6/9	Keith Farm,Chilmark	3 Allan Keith
6/10	CRPL,Chelmsford	7 Tom Whelan
6/11	Hale Res,Westwood	13 Erik Nielsen
6/12	E Longmeadow	25 Karen Parker
6/12	Ffolliott's Farm,Ipswich	6 Sharon Stichter
6/19	E Longmeadow	46 Karen Parker
6/23	BFD,Hubbardston	5 Price+Barry+Mullen
6/24	BFD,Hubbardston	5 Dolores Price #
6/26	Quabbin Park,Belchertown	8 Erik Nielsen
7/23	Middleboro NABA	10 Karen Holmes
7/24	Berkshire County	18 Bill Benner #
8/5	Northampton CG	40 Bill Benner
8/6	E Longmeadow	53 Karen Parker
8/12	Whately	8 Bill Benner
8/17	Parker River NWR Hq,NP	20 Sharon Stichter
8/21	Northampton CG	17 Bill Benner+VO



8/28 Wayland CG 25 Wendy Miller  
 9/1 Cape Ann 14 Doug Savich  
 9/1 Wayland CG 20 Tom Murray  
 9/20 Stichter Yard,Newbury 1 Sharon Stichter  
 9/21 Boston Nature Center 1 Andrew Birch  
 9/21 Cape Ann 4 Doug Savich  
 9/21 Marblehead 1 Karen Haley  
 9/22 E Longmeadow 1 Karen Parker  
 10/1 Ballard Hill RA,Lancaster 2 Tom Murray  
 10/1 W Meadows,Northampton 1 T Gagnon+R Cloutier  
 10/5 NAC,Concord 1 Tom Murray

### Tawny-edged Skipper

5/27 E Longmeadow 1 Karen Parker  
 5/29 Florence 2 Tom Gagnon  
 6/4 BMBWS,Worcester 1 MBC(Jo-Ann Mullen)  
 6/4 Whately 2 Bill Benner #  
 6/5 E Longmeadow 3 Karen Parker  
 6/7 Dauphinis Park,Grafton 1 Price+Barry+Mullen  
 6/8 Bart's Cobble,Sheffield 4 Elise Barry  
 6/11 Sherborn PL 3 Bob Bowker  
 6/21 Keith Farm,Chilmark 1 Allan Keith  
 6/26 Quabbin Park,Belchertown 4 Erik Nielsen  
 7/10 Mount Greylock 3 Tom Gagnon #  
 7/16 Falmouth NABA 29 Alison Robb #  
 7/23 Brewster NABA 8 Alison Robb #  
 7/31 E Longmeadow 20 Karen Parker  
 8/5 Northampton CG 35 Bill Benner  
 8/13 Whately 6 Bill Benner  
 8/21 Northampton CG 8 Bill Benner+VO  
 8/24 Keith Farm,Chilmark 1 Allan Keith  
 9/3 AP,Dartmouth 3 Nielsen+ Raymond  
 9/11 Wayland CG 1 Erik Nielsen  
 9/19 Dunback Meadows, Lexington 2 Andrew Birch  
 10/1 Northampton CG 1 Gagnon+R Cloutier

### Crossline Skipper

6/21 Crane WMA,Falmouth 1 Alison Robb  
 7/2 Williams Land,Harvard 1 Tom Murray #  
 7/3 C Franklin NABA 3 Mark Fairbrother #  
 7/3 GBH,Canton 1 MBC(Murray+Nielsen)  
 7/4 BMBWS,Worcester 1 Barbara Walker  
 7/10 N Worcester NABA 4 Carl Kamp  
 7/13 Oak Bluffs 19 Matt Pelikan  
 7/16 Blackstone Valley NABA 15 Tom Dodd #  
 7/16 MV NABA 49 Matt Pelikan  
 7/19 Bristol NABA 1 Mark Mello #  
 7/23 Brewster NABA 3 Alison Robb #  
 7/24 GBH,Canton 13 Erik Nielsen  
 7/26 16 Acres GC,Springfield 1 Roger Pease  
 7/29 Tuckermuck Island 1 Matt Pelikan  
 7/30 Quabbin Park,Belchertown 1 M Lynch+S Carroll

### Long Dash

6/10 CRPL,Chelmsford 9 Tom Whelan  
 6/11 GBH,Canton 2 Erik Nielsen  
 6/11 Graves Farm,Williamsburg 5 Bill Benner  
 6/12 Ffolliott's Farm,Ipswich 200 Sharon Stichter  
 6/20 William Forward 27 Sharon Stichter  
 6/23 Cape Ann 5 Doug Savich  
 6/25 MBWMA,Newbury 6 MBC(S Stichter)  
 6/26 Tully Dam,Royalston 4 Carl Kamp  
 7/3 C Franklin NABA 3 Mark Fairbrother #  
 7/3 GBH,Canton 2 MBC(Murray+Nielsen)  
 7/3 MPRA,W Newbury 1 Sharon Stichter #  
 7/4 Gill 1 Cloutier #  
 7/4 Mount Greylock 2 Cloutier #  
 7/10 Mount Greylock 6 Tom Gagnon #  
 7/10 N Worcester NABA 5 Carl Kamp

7/12 S Berkshire NABA 4 Renee Laubach  
 7/18 Nomans Island,Chilmark 2 Allan Keith  
 7/23 Middleboro NABA 2 Karen Holmes  
 7/24 E Longmeadow 2 Karen Parker  
 8/26 Upton 1 Brian Cassie  
 9/21 W Tisbury 1 Matt Pelikan

### Northern Broken-Dash

6/12 Mount Greylock 1 M Lynch+S Carroll  
 6/18 GBH,Canton 1 Bob Bowker  
 6/28 MBWMA,Newbury 1 Sharon Stichter #  
 7/2 HPM,Wobum 2 MBC(Marj Rines)  
 7/3 C Franklin NABA 4 Mark Fairbrother #  
 7/10 MBWMA,Newbury 13 Sharon Stichter #  
 7/10 Mount Greylock 1 Tom Gagnon #  
 7/10 N Worcester NABA 9 Carl Kamp  
 7/16 Blackstone Valley NABA 22 Tom Dodd #  
 7/16 MV NABA 2 Matt Pelikan  
 7/16 Northampton NABA 20 Dottie Case  
 7/20 Stichter Yard,Newbury 6 Sharon Stichter  
 7/21 Whately 1 Bill Benner  
 7/23 Brewster NABA 20 Alison Robb #  
 7/23 Milford PL 4 Erik Nielsen  
 7/24 Cape Ann 2 Doug Savich  
 7/24 Gate 8,Boylston 1 MBC(Wendy Miller)  
 7/24 GBH,Canton 9 Erik Nielsen  
 7/25 Royalston 3 Carl Kamp  
 7/25 Sherborn PL 13 Bob Bowker  
 8/5 Northampton CG 1 Bill Benner  
 8/6 Stichter Yard,Newbury 2 Sharon Stichter  
 8/6 Tower Hill,Boylston 2 Wendy Miller  
 8/9 Essex County 2 Sharon Stichter  
 8/13 Whately 1 Bill Benner

### Little Glasswing

6/24 E Longmeadow 1 Karen Parker  
 7/1 E Longmeadow 6 Karen Parker  
 7/2 HPM,Wobum 5 MBC(Marj Rines)  
 7/2 Paine Estate,Waltham 1 Jason Forbes  
 7/2 Williams Land,Harvard 1 Tom Murray #  
 7/3 C Franklin NABA 15 Mark Fairbrother #  
 7/3 GBH,Canton 8 MBC(Murray+Nielsen)  
 7/3 MPRA,W Newbury 14 Sharon Stichter #  
 7/10 Cherry Hill Res,W Newbury 5 Erik Nielsen  
 7/10 Concord NABA 15 Dick Walton #  
 7/10 Mount Greylock 2 Tom Gagnon #  
 7/10 N Worcester NABA 13 Carl Kamp  
 7/12 Dauphinis Park,Grafton 4 Dolores Price #  
 7/12 S Berkshire NABA 18 Renee Laubach  
 7/16 Blackstone Valley NABA 33 Tom Dodd #  
 7/19 Bristol NABA 3 Mark Mello #  
 7/21 Cummington 3 Barbara Spencer  
 7/23 Middleboro NABA 1 Karen Holmes  
 7/24 G35,Wachusett Res 3 MBC(W. Miller)  
 8/2 BMBWS,Worcester 2 Dolores Price  
 8/6 Leicester 1 MBC(D. Price)  
 8/17 Plum Island 1 Sharon Stichter  
 8/28 GBH,Canton 1 Erik Nielsen

### Sachem

8/19 Northampton CG 1 Tom Gagnon  
 9/3 Northampton CG 1 Tom Gagnon  
 10/6 Northampton CG 1 Chris Gentes

### Delaware Skipper

7/3 C Franklin NABA 4 Mark Fairbrother #  
 7/10 Concord NABA 11 Dick Walton #  
 7/10 IRWS,Topsfield 4 Fred Goodwin #  
 7/10 N Worcester NABA 24 Carl Kamp

Massachusetts Butterflies No. 26, Spring 2006

© Copyright 2006 Massachusetts Butterfly Club. All rights reserved.

7/12 MBWMA,Newbury 4 Sharon Stichter #  
 7/12 S Berkshire NABA 8 Renee Laubach  
 7/16 Blackstone Valley NABA 35 Tom Dodd #  
 7/16 Northampton NABA 21 Dottie Case  
 7/17 Cape Ann 4 Doug Savich  
 7/21 Cummington 2 Barbara Spencer  
 7/24 GBH,Canton 2 Erik Nielsen  
 7/24 Williams Land,Harvard 2 S Moore+B Volke  
 7/30 Cape Ann 1 Doug Savich  
 7/30 Middleborough 1 Karen Holmes  
 9/13 Northampton CG 1 Tom Gagnon

### Mulberry Wing

7/10 Concord NABA 2 Dick Walton #  
 7/10 N Worcester NABA 1 Carl Kamp  
 7/10 Quaboag WMA,Brookfield 1 M Lynch+S Carroll  
 7/11 Williams Land,Harvard 1 Tom Whelan  
 7/12 S Berkshire NABA 5 Renee Laubach  
 7/16 Blackstone Valley NABA 34 Tom Dodd #  
 7/16 Bolton Flats 1 M Lynch+S Carroll  
 7/16 Northampton NABA 21 Dottie Case  
 7/22 Hinsdale 6 Barbara Spencer  
 7/23 Milford PL 7 Erik Nielsen  
 7/23 Springfield 1 Tom Gagnon  
 7/24 Berkshire County 1 Bill Benner #  
 7/24 Cummington 1 Barbara Spencer  
 7/24 E Longmeadow 1 Karen Parker  
 7/24 Williams Land,Harvard 1 S Moore+B Volke  
 7/25 Sherborn PL 7 Bob Bowker  
 7/28 Cape Ann 1 Doug Savich

### Hobomok Skipper

5/30 Petersham 1 Carl Kamp #  
 6/3 Graves Farm,Williamsburg 1 Bill Benner  
 6/3 Whately 1 Bill Benner  
 6/5 E Longmeadow 6 Karen Parker  
 6/6 Oxbow Nwr,Harvard 1 Erik Nielsen  
 6/7 Middleborough 1 Karen Holmes  
 6/8 Keith Farm,Chilmark 2 Allan Keith  
 6/11 Cape Ann 1 Doug Savich  
 6/11 Graves Farm,Williamsburg 7 Bill Benner  
 6/12 Mount Greylock 12 M Lynch+S Carroll  
 6/18 E Longmeadow 10 Karen Parker  
 6/19 NCM,Petersham 7 MBC(Benner+Gagnon)  
 6/20 William Forward 5 Sharon Stichter  
 6/24 High Ledges WS,Shelburne 2 C Kamp+A Mayo  
 6/25 NCM,Petersham 1 S Moore+B Volke  
 6/29 Cape Ann 1 Doug Savich  
 7/2 E Longmeadow 1 Karen Parker  
 7/3 C Franklin NABA 4 Mark Fairbrother #  
 7/4 Gill 1 Cloutier #  
 7/10 Mount Greylock 3 Tom Gagnon #  
 7/16 MV NABA 2 Matt Pelikan

### Zabulon Skipper

7/23 Springfield 1 Tom Gagnon  
 8/12 E Longmeadow 1 Karen Parker  
 8/13 FSWMA,Longmeadow 3 Erik Nielsen  
 8/14 FSWMA,Longmeadow 3 MBC(Gagnon+Parker)  
 9/3 Florence 1 Tom Gagnon

### Broad-winged Skipper

7/15 Riverbend Park,Medford 1 Renee Lafontaine  
 7/16 Blackstone Valley NABA 12 Tom Dodd #  
 7/19 Bristol NABA 3 Mark Mello #  
 7/23 Milford PL 9 Erik Nielsen  
 7/23 Springfield 6 Tom Gagnon  
 7/24 Berkshire County 23 Bill Benner #  
 7/24 E Longmeadow 1 Karen Parker

7/26 16 Acres GC,Springfield 1 Roger Pease  
 8/4 Marblehead 40 Karen Haley  
 8/5 Easthampton 1 Bruce King  
 8/6 Stichter Yard,Newbury 1 Sharon Stichter  
 8/7 Fort Hill,Eastham 2 M Lynch+S Carroll  
 8/7 Joppa Flats,NP 3 Sharon Stichter  
 8/14 GMNWR,Concord 1 Erik Nielsen  
 8/17 Plum Island 1 Sharon Stichter  
 8/28 Fowl Meadows,Milton 5 Erik Nielsen  
 9/3 AP,Dartmouth 3 E Nielsen+T Raymond  
 9/3 Gooseberry Neck,Westport 1 Nielsen+ Raymond  
 9/10 AP,Dartmouth 1 Tom Murray+V.O.

### Dion Skipper

7/4 N Adams 5 Cloutier #

### Black Dash

6/19 Tom Swamp,Petersham 1 MBC(Benner+Gagnon)  
 7/3 C Franklin NABA 1 Mark Fairbrother #  
 7/10 Concord NABA 1 Dick Walton #  
 7/16 Blackstone Valley NABA 3 Tom Dodd #  
 7/19 Bristol NABA 7 Mark Mello #  
 7/22 Hinsdale 1 Barbara Spencer  
 7/24 Williams Land,Harvard 2 S Moore+B Volke  
 7/27 Wellfleet 5 Tom Whelan  
 7/28 Cape Ann 8 Doug Savich  
 7/30 Middleborough 1 Karen Holmes

### Two-spotted Skipper

6/24 Tom Swamp,Petersham 2 Tom Murray  
 6/25 Tom Swamp,Petersham 1 S Moore+B Volke  
 6/26 Tom Swamp,Petersham 1 Erik Nielsen

### Dun Skipper

7/3 C Franklin NABA 7 Mark Fairbrother #  
 7/10 Concord NABA 6 Dick Walton #  
 7/10 IRWS,Topsfield 4 Fred Goodwin #  
 7/10 Mount Greylock 6 Tom Gagnon #  
 7/10 N Essex NABA 5 Fred Goodwin #  
 7/10 N Worcester NABA 8 Carl Kamp  
 7/12 S Berkshire NABA 50 Renee Laubach  
 7/13 Truro NABA 2 Tor Hansen #  
 7/16 Blackstone Valley NABA 52 Tom Dodd #  
 7/16 Falmouth NABA 24 Alison Robb #  
 7/16 MV NABA 100 Matt Pelikan  
 7/16 Northampton NABA 75 Dottie Case  
 7/21 Cummington 30 Barbara Spencer  
 7/21 Williamstown 1 Pam Weatherbee  
 7/22 Hinsdale 8 Barbara Spencer  
 7/23 Middleborough 1 Karen Holmes  
 7/24 Berkshire County 125 Bill Benner #  
 7/24 Gate 8,Boylston 13 MBC(W. Miller)  
 7/24 Williams Land,Harvard 5 S Moore+B Volke  
 7/25 Sherborn PL 24 Bob Bowker  
 7/30 Quabbin Park,Belchertown 14 M Lynch+S Carroll  
 7/31 E Longmeadow 6 Karen Parker  
 8/2 BMBWS,Worcester 4 Dolores Price  
 8/4 Edgartown 20 Matt Pelikan  
 8/6 Leicester 8 MBC(D. Price)  
 8/8 Plum Island 2 M Lynch+S Carroll  
 8/10 Stichter Yard,Newbury 1 Sharon Stichter  
 8/13 Crane WMA,Falmouth 1 Alison Robb  
 8/21 Whately 1 Bill Benner

### Dusted Skipper

5/29 Florence 71 Tom Gagnon  
 5/30 Athol 1 Carl Kamp #  
 6/3 Lamson Rd,Foxborough 2 M. Champagne  
 6/4 BMBWS,Worcester 9 MBC(Jo-Ann Mullen)  
 6/6 Delaney WMA,Stow 12 Erik Nielsen

6/7	Dauphinis Park,Grafton	1	Price+Barry+Mullen
6/11	Cedar Hill,Lexington	15	Tom Whelan
6/11	Hale Res,Westwood	2	Erik Nielsen
6/18	GBH,Canton	1	Bob Bowker
6/19	BMBWS,Worcester	1	Barbara Walker
6/26	Tully Dam,Royalston	2	Carl Kamp

### Pepper and Salt Skipper

5/28	Paxton	1	Elise Barry
5/30	Larkin RA,Northbridge	3	D Price+W Miller
6/4	BMBWS,Worcester	1	MBC(J. Mullen)
6/5	Kettlebrook Res,Paxton	1	M Lynch+S Carroll
6/5	Mount Greylock	5	MBC(Benner+Gagnon)
6/12	Florence	1	Bill Benner #
6/19	NCM,Petersham	2	MBC(Benner+Gagnon)

### Common Roadside-Skipper

6/7	E Longmeadow	1	Karen Parker
6/13	E Longmeadow	1	Karen Parker

### Ocola Skipper

9/10	AP,Dartmouth	1	Tom Murray+V.O.
9/10	Sylvan Nursery,Westport	2	Erik Nielsen
9/11	Nahant	1	Dorothy Saffarewich
9/12	Heirloom PN,Princeton	1	Barbara Walker
9/18	Dunback Meadows, Lexington	1	Jason Forbes
9/18	W Meadows,Northampton	1	MBC(T. Gagnon)
9/19	Dunback Meadows, Lexington	2	Andrew Birch
9/20	Waring Field,Rockport	6	Doug Savich
9/21	Boston Nature Center	2	Andrew Birch
9/21	FCTS,Montague	1	Mark Fairbrother
9/21	Haley Yard,Marblehead	1	Karen Haley
9/21	Northampton CG	2	Tom Gagnon
9/22	Waring Field,Rockport	6	D Savich+C Tibbits
9/22	Whately	1	Bill Benner
9/24	Gooseberry Neck,Westport	1	Brian Cassie
9/24	Sylvan Nursery,Westport	1	Brian Cassie
9/24	Umass Stadium,Amherst	2	Frank Model
9/27	Cape Ann	1	Doug Savich
10/2	Wayland CG	1	E Nielsen+T Murray
10/3	Northampton CG	1	Tom Gagnon
10/3	Turners Falls	1	Mark Fairbrother
10/5	NAC,Concord	1	Tom Murray
10/6	Northampton CG	1	Tom Gagnon



*Massachusetts Butterflies No. 26, Spring 2006*

© Copyright 2006 Massachusetts Butterfly Club. All rights reserved.

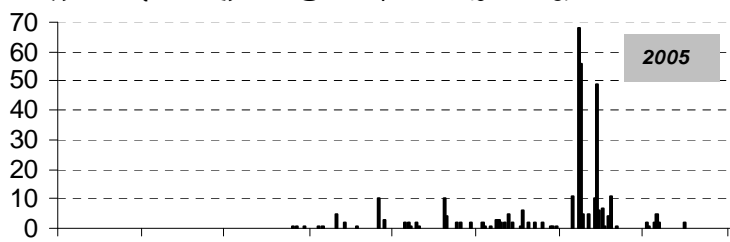
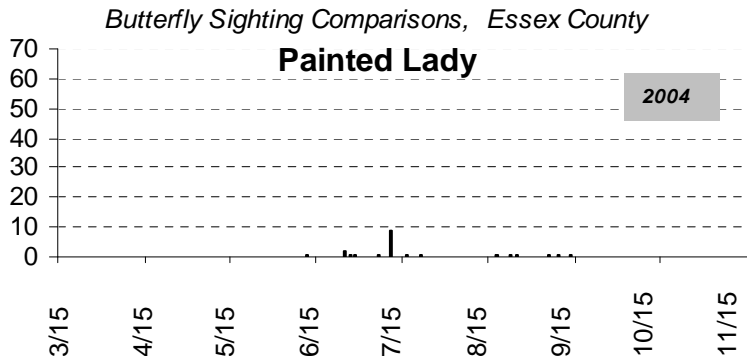
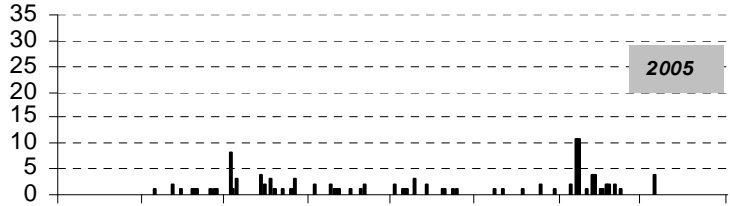
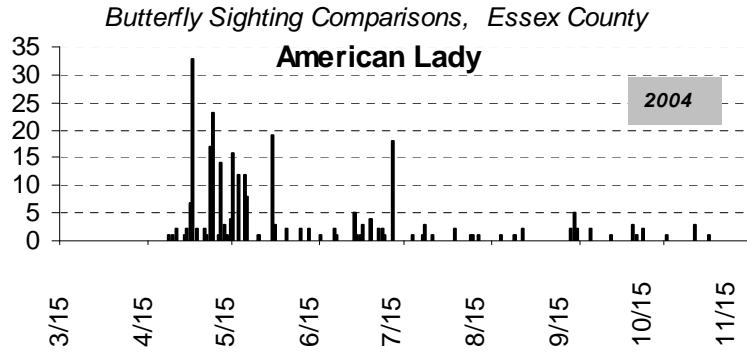
## **Migrant Nymphalids in Essex County, 2004-5**

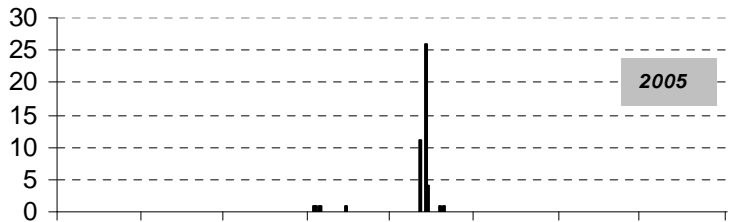
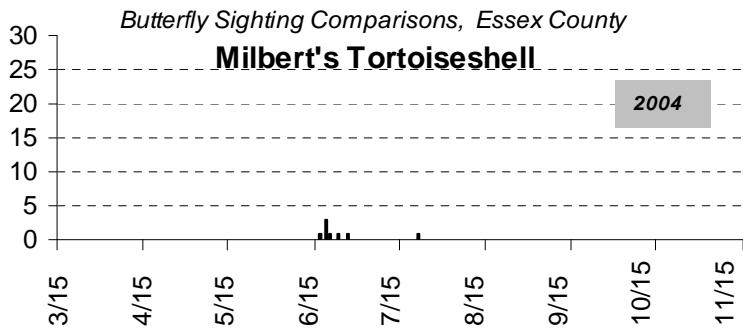
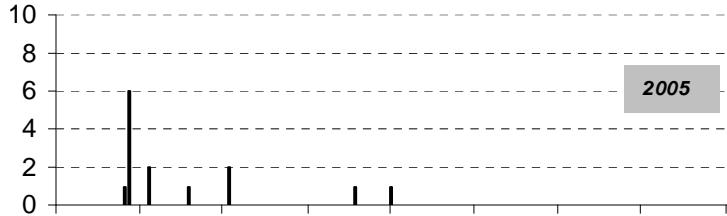
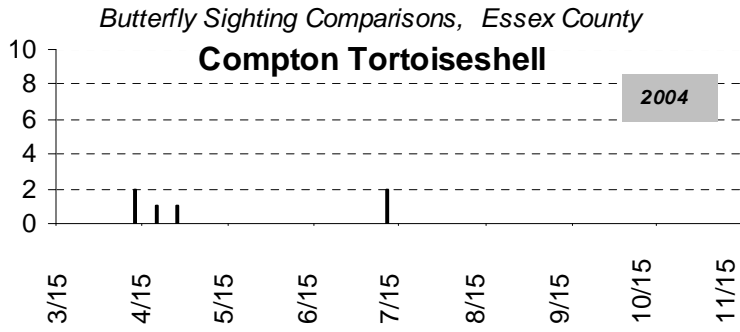
By Sharon Stichter

Essex County may be one of the most studied regions of Massachusetts, as least with respect to bird life. In the past few years, we have also had a good number of active butterfly watchers throughout the county, so that there is enough sightings data to make some attempt at systematic analysis. The following summaries and generalizations depend upon data provided by many sharp-eyed observers and reflect their first-hand field experience.

The charts presented here compare the number of sightings of selected Nymphalinae for 2004 and 2005. They were produced by Lynette Leka of Newbury, MA, an avid birder and retired data manager at Tufts University, who enjoyed working with the local butterfly reports. The data on which the charts are based are a subset of the state-wide database, kindly provided by Erik Nielsen, Records Compiler for the Massachusetts Butterfly Club. The field observers who provided the reports are Elise Barry, Jim Berry, Sissy Ffolliott, Bill Gette, Fred Goodwin, Karen Haley, Susan Hedman, Rick Heil, Carl Kamp, Dave Larson, Mark Lynch and Sheila Carroll, Wendy Miller, Steve Moore and Barbara Volkle, Tom Murray, Erik Nielsen, Alison O'Hare, Dolores Price, Scott Santino, Dorothy Saffarewich, Doug Savich, Bob Speare, Sharon Stichter, Claudia Tibbits, Tom Whelan, and Betty Wright.

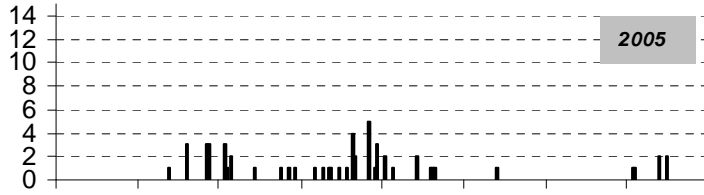
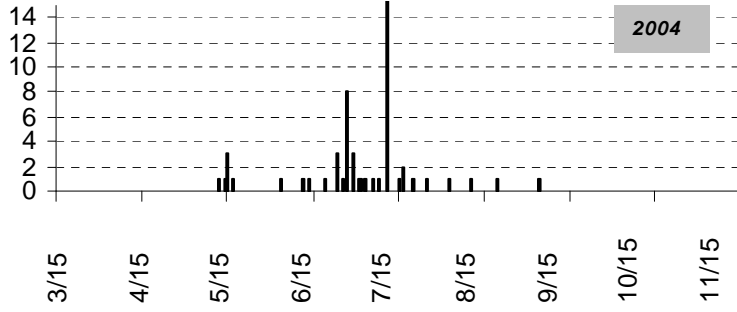
The charts for particular species record number of sightings on a linear scale; the chart for all species seen is on a logarithmic scale.





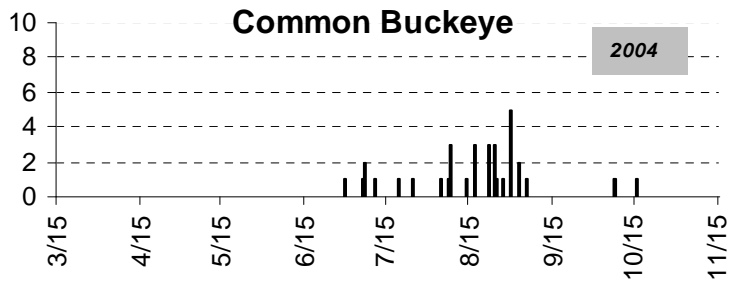
*Butterfly Sighting Comparisons, Essex County*

**Red Admiral**



*Butterfly Sighting Comparisons, Essex County*

**Common Buckeye**



“Number of sightings” is not by itself an adequate measure of the actual butterfly population (abundance) in an area, because it does not take into account “observer effort,” that is, how many observers there were, and how much time was spent and distance traveled in order to get the sightings. We have no easy way to gauge observer effort here. If it were constant between 2004 and 2005, we might choose to disregard it in comparing the two years. But by one measure, it may have increased somewhat between 2004 and 2005: of the 245 possible reporting days between March 15 and November 15, there were reports on 151 days in 2004 and 162 days in 2005. Also, the total number of locations reported on increased somewhat. However, the total number of different people reporting was about the same-- 20 for 2004 and 19 for 2005. It seems we just worked a little harder in 2005.

So for the year-to-year comparisons of particular species which this article presents, the charts give only a rough approximation, but one which is extremely useful. For “relative abundance” in the sense of abundance of one species relative to other species in a given year, the summary chart for 2005 on pages 44-45 can be taken as a better approximation, because in that case observer effort is held constant. In this chart, a log scale is used to more accurately accommodate a few large “off the scale” values.

The most dramatic sighting difference between the two years involves American Ladies and Painted Ladies. As the charts on page 35 show, we witnessed a banner year for Painted Ladies in 2005 compared to the previous year, coinciding with a poor year for American Ladies. Both species arrived at about their usual time in both years (see Table 1 below), but the early number of American Ladies was very low compared to 2004, and remained thin throughout the season.



Table 1.  
Sightings, American and Painted Ladies, 2004 vs. 2005

	2004	2005
<u>American Lady</u>		
First:	4/22 Nahant D. Saffarewich	4/19 Newbury S. Stichter
Last:	10/31 Newbury S. Stichter	10/20 Cape Ann D. Savich
Total seen:	266	115
No. of reports:	87	68
<u>Painted Lady</u>		
First:	6/11 Cape Ann D. Savich	6/09 Newbury S. Stichter
Last:	9/13 Cape Ann D. Savich	10/30 Marblehead K. Haley
Total seen:	23	349
No. of reports:	15	68

The earliest sightings of these species in Essex County are normally somewhat later than they are elsewhere in the state. American Ladies are probably short-distance migrants from further south, while Painted Ladies are reported to migrate long distances, often from the southwest.

American Ladies in 2004 arrived in notable numbers in April and May, and good numbers continued throughout the season in this region. The largest single day reports came at the beginning of the season: Dorothy Saffarewich saw 33 on Nahant on 5/01/04, and Jim Berry saw 22 in Rockport on 5/08/04. However, not that many were seen migrating in September, and certainly no large concentrations; this suggests a less-than-stellar reproduction year.

In 2005, arrival numbers were low compared to 2004. The total number seen this year was only 115, down from 266 in 2004, and number of reports was down from 87 to 68. However, better numbers were seen migrating during September 2005, compared to earlier in the year and compared to September 2004. The highest day count for the 2005 season was nine on 9/21/05 at Eastern Point Gloucester by Doug Savich. This suggests some buildup in numbers over the summer.

Painted Ladies had a poor year in Essex County in 2004 (see chart, p. 35), as they did in the state as a whole [see E. Nielsen, "2004 Season Summary and Records," *Massachusetts Butterflies* 24, Spring 2005.] There were only a total of 23 sighted, from 15 trip reports. The highest number seen on any one day was six on 7/11/04 at Little Farm by E. Nielsen, and the last sighting was only in mid-September. The contrast with 2005 is striking. The total seen was 349, the total number of reports was 77. Numbers increased markedly over the season, whether from reproduction or new immigrants is not known. At the Eastern Point migration stopover in Gloucester, Doug Savich saw 56 Painted Ladies compared to only nine Americans on September 21, 2005. The last Painted Lady sighting in Marblehead on October 30, 2005 was much later than in the previous year.

Given the strongly migratory nature of Painted Ladies, we can expect that their sighting numbers will be quite variable from year to year. They must recolonize the east every year, and the size of their emigration from the southwestern deserts seems to increase with higher levels of winter precipitation there, resulting in "boom and bust" cycles. The numbers of American Ladies, which are only short-distance migrants, are usually much more constant. A look at the other strongly migratory Vanessa species, Red Admiral, suggests that the number of its sightings, like those of Painted

Ladies, can be expected to be quite variable from year to year (see charts, p. 37). Red Admirals were seen both earlier and later in 2005 than in 2004 (First sightings 4/26/05 Newbury, S Stichter, *versus* 5/12/04 Salem J. Berry, and last sightings 10/30/05 Marblehead K. Haley, *versus* 9/03/04 Newbury, S Stichter.). There were a couple of large mid-season sightings in 2004 (for example 10 on 7/11/04 at Little Farm, E. Nielsen) but overall the total number seen that year, 52, was smaller than the 62 seen in 2005, and the number of reports fewer, so 2004 seems a comparatively weak season for Red Admirals in this region.

Adding to the picture of long-distance migrant variability are the sighting records for Common Buckeye (chart, p.37). Normally we see at least some arrivals late in the season, as depicted in the chart for 2004; that year we saw 34 Common Buckeyes total, the earliest being 6/30/04 on Cape Ann and the last being 10/16/04 on Cape Ann, both by D. Savich. In the state as a whole, Common Buckeyes were also “widely reported” that year. But 2005 was a “bust” for this species in Essex County—not a single one was reported! In fact, they barely made it to our state: there were only six reports statewide, all in southeastern MA. [E. Nielsen, “2004 Season Summary and Records”, *Massachusetts Butterflies* 24, Spring 2005, and E. Nielsen, “2005 Season Summary and Records,” this issue.] According to Pat Sutton at the NJ Audubon Center at Cape May, Common Buckeyes were very few and their arrivals quite late in that area as well. This probably reflects conditions further to the south.

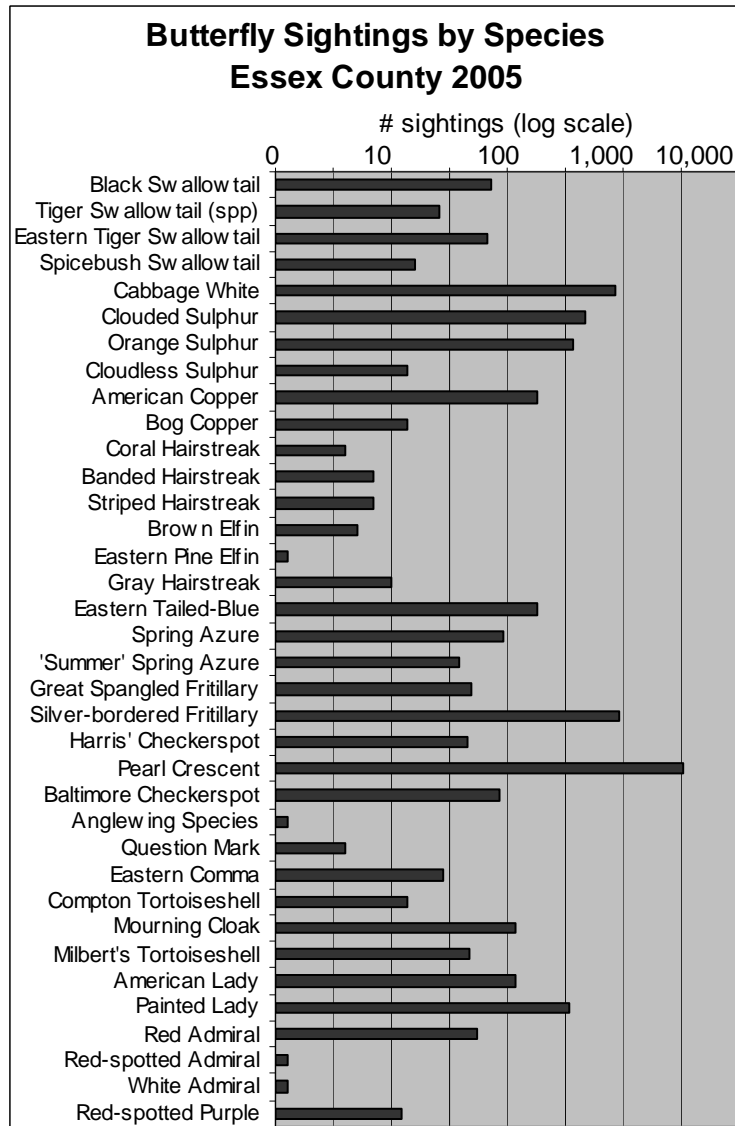
The two Tortoiseshells, Compton and Milbert’s (charts on p. 36), present a different picture, since both are at the southern edge of their range here, unlike the previous species. Milbert’s Tortoiseshell arrived in Massachusetts with a vengeance in 2003, in one of their periodic large flights from the north or west [ see B.

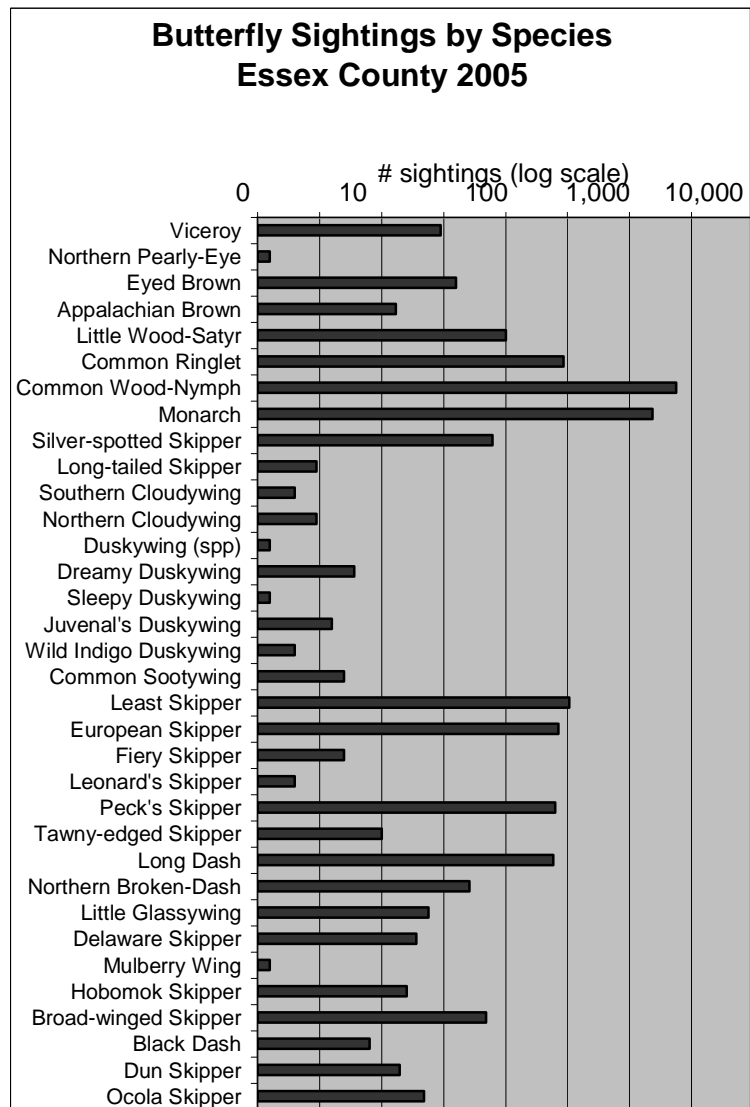
Cassie, "2003 Butterfly Year in Review," *Massachusetts Butterflies* 22, Spring 2004]. They apparently did not reach Essex County in that year; at least, I can find no reports. In 2004, they "had another great year" statewide, and finally did reach Essex County, causing great excitement beginning with a sighting by Dave Larson at his yard in Bradford on 6/17/04 followed by two in the yard on 6/19/04. Then on the same day one was seen at the newly installed Joppa Flats butterfly garden on the Merrimack River in Newburyport by Laura da la Flor and Cheryl Champi, and then one was seen by me in my Newbury yard on 6/23/04. One midsummer sighting on 7/22/04 at Martin Burns WMA suggests that they may have had some successful reproduction and thus one additional weak flight later that year.

According to J. A. Scott, *The Butterflies of North America*, ( p. 289), Milbert's Tortoiseshell has two flights per year at latitudes between Pennsylvania and northern New York state, and perhaps three south of that. The species overwinters as adults, then flies in early spring, when it is seen in central and western Massachusetts. It seems possible that it is only a second, summer brood which has reached Essex County the last two years; at any rate, there have been no sightings here before June. In 2005 this region again had sightings at similar time periods, and again, we cannot rule out some reproduction in the wild and a possible third flight. However, I have a confession to make. All of the sightings shown of the midsummer brood, between 7/26/05 and 8/04/05, came from my yard in Newbury. I raised these in cages, or on protected plants in the garden, and released the adults. This was fun, and at least demonstrated that Milbert's could probably raise a brood on nettles in the wild in this area. But I have to state that the apparent differences between the 2004 and 2005 charts shown on p. 36 are not reflective of natural processes.

Compton Tortoiseshells have been regular residents in Essex County over the past five years, albeit in small numbers. For the state as a whole, Comptons had an “average flight” in 2004 and in 2005 they were “well represented” in the statewide reports. [E. Nielsen, “2005 Season Summary and Records,” this issue]. As described in the published literature, and by Mike Nelson in a note posted to MassLep on 7/13/04, Compton Tortoiseshells have one brood a year. They overwinter as adults and begin flying in the spring. Thus in Essex County we have some early sightings recorded: 3/26/03 Cape Ann by Doug Savich; 4/12/04 at Crooked Pond Boxford by Tom Murray, and 4/09/05 at Ipswich River Sanctuary by Fred Goodwin. The butterflies then mate and lay eggs, the new brood emerging from chrysalis sometime in July. These adults can be seen until they go into diapause during late summer, but they sometimes fly again in late fall, presumably to fatten up a bit for overwintering (For example, one was seen by Jim Berry on 10/18/02 in Ipswich.). This seasonal pattern is clearly illustrated in the 2004 and 2005 charts on p. 36, which show flights at very similar time periods for the two years.

At well-studied locations such as MAS Ipswich River Wildlife Sanctuary in Topsfield, Compton Tortoiseshells are usually quite regular (with a high count of six on 4/10/05), but seem to disappear in some years. Fred Goodwin has suggested that they may be following a multi-year cycle, expanding in numbers for perhaps ten or so years, then dying out and having to re-colonize again, perhaps from further north. For the county as a whole, there were only six seen in 2004 and 14 in 2005, making 2005 seem the better year, as it was in the state as a whole. However, one cannot conclude much from such small numbers over only two years. In the future we hope to document the longer-term cycles that may be evident in a species such as the Compton Tortoiseshell.





## **Trip Reports: Colorado Butterfly Trip – July 9-17, 2005**

By Steve Moore

Nine members of the Massachusetts Butterfly Club traveled to Colorado on July 9, 2005 for a great week of butterflying. We saw 115 species in various habitats, along with some interesting birds and mammals. Our group included Ron and Sue Cloutier, Tom and Joyce Prince, Steve Moore, Barbara Volkle, Tom Murray, Bill Benner and Joe Wicinski.

Why Colorado? All of us had attended the NABA biennial convention in South Texas in 2004, which left us with Arizona, New Mexico or Colorado as the states with the most available species. Some interesting articles in *American Butterflies* relating to Colorado had sparked our interest. When we discovered that the Club's own Andrew Spencer had lived and butterflyed extensively in Colorado and was willing to join us, the decision was easy.

July is the best time in Colorado for the most species, and Andrew provided us with an itinerary that promised a maximum number of species (and a bit of driving!). Ultimately Andrew accepted a summer position in Nevada, which unfortunately prevented him from joining us.

The best area for butterflies is the front range around the Golden area. The Gilpin County July 4<sup>th</sup> Count has led the nation in species reported in many years and we found out why. We were fortunate to be invited to participate in that Count on July 10 by Ray Stanford, and it was one of the highlights of the trip. Basically we stayed at Golden (which is the best place from which to do this area of the foothills) the first three nights, Grand



Junction for two nights, Gunnison for one night, Alamosa for one night and near the Denver Airport Saturday night. We had about 80 species by the time we reached Grand Junction with the stops at Unaweep Seep, Alamosa area and Cottonwood Pass being for specialties of those areas. The principal places we visited are described below. (The letters relate to the attached species list.)

B. Apex Park near Golden. Jefferson County. A county park with multiple uses (including mountain bikes and joggers). See *American Butterflies* article by Andy Warren, Spring 1995. A typical foothills park with elevation ranging from 6200 to 7281 feet above sea level. DeLorme Map 40.

C. Mt. Galbraith Park. Jefferson County. Near the base of Golden Gate Canyon northwest of Golden. Another county park with multiple uses. Heavily forested with numerous streams. The list for C includes butterflies seen at White Ranch Park and Reynolds Park which were nearby. DeLorme Map 40.

D. Genesee Park. Jefferson County off of Route 70 at Exit 254. A nice foothills park with picnic facilities and some hilltop features. DeLorme Map 40.

E. Turkey Creek Canyon, Tiny Town. Jefferson County. On Route 285 west of Route 470. The Canyon is across the street from a railroad train theme park. A hike up the canyon behind the convenience store is rewarding as was a picnic area just south of town on 285 on the right. DeLorme Map 40.

F. Waterton Canyon. Jefferson County. Off Deer Creek Canyon Road near the Chatsfield Reservoir. A long hike (a mile or so) in the heat was rewarded by many butterflies most of which were

seen along the stream on our left as we hiked into the Canyon. DeLorme Map 40.

G. Mt Zion. Gilpin County. Take Route 58 west out of Golden, left on West 6<sup>th</sup> Avenue and right on Loop Road . A true hilltop in the foothills with sparse vegetation. DeLorme Map 40.

H. Loveland Pass and Pass Lake. Clear Creek County. The Pass is well marked on all maps. Pass Lake is shortly after leaving the Pass on our right as we headed west from the Pass. At the Lake we went to the rockslide at the back of the lake for the Magdalena Alpine and Lustrous Copper. DeLorme Map 38.

I. Blue River Campground. Summit County. On the right as we headed north on Route 9 from Route 70 (at Silverthorne). Good sagebrush and streamside habitat. DeLorme Map 38.

J. Unaweep Seep. Mesa County. Leaving Grand Junction take Route 50 south and then west on Route 141. Good streamside habitat on the north side of the road across from the state marker and parking lot. DeLorme Map 54.

K. Hanging Lake State Park and No Name Canyon. Garfield County. No Name is at Exit 119 off of Route 70. Hanging Lake is at Exit 126. The state park has a lake but we did not take the 2+ mile hike to the lake, walking instead along the Colorado River bank with great success. No Name Canyon is nearby and requires an uphill hike of about a mile along a wonderful stream. DeLorme Maps 35 & 36.

L. Alamosa River area at Terrace Reservoir. Conejo County. South and west of Alamosa. Riparian habitat along the reservoir and river

banks, but also desert scrub type habitat where Spalding's Blue is found. DeLorme Map 89.

M. Cottonwood Pass. Chaffee County. West of Buena Vista on Cottonwood Pass Road. 12,126 feet above sea level. Arctics and Alpines here at the Pass. DeLorme Map 59.

As mentioned one of the main highlights of the trip was the Gilpin County Count. Nine of us and 21 Coloradians showed up for the Count. We had no nets, they had virtually no close focusing binoculars. Many of them were amazed by what one could see with the binoculars. In one case a mistaken identification was corrected after the binoculars noted no green on a "Juniper" Hairstreak – it was a Behr's. We got a lesson on Fritillary identification from a few hand held bugs which would have been more difficult if we had just been looking at flybys. I was surprised with their acute visual identification skills without the aid of any binoculars. Ray Stanford and his wife Kit put on a great dinner at their mountain cabin where we met Paul Opler and Evi Buckner, Ro Wauer and other true lepidopterists. I highly recommend participating in these Counts in a new area, as one will learn a lot from the local butterflyers and get a much better handle on the identification techniques that are helpful when first butterflying in a new area. Despite not having butterflyed in the area before, we were able to contribute. Ron & Sue found the only Nais Metalmark, Barbara found the only Ottoe Skipper, Tom Prince found the only Common Alpine in Ray's back field and Tom Murray, Bill and Joe all found unusual butterflies for their leader to identify.

Another highlight of any trip to Colorado is the high mountain passes, such as Loveland, which is about 11,000 feet and Cottonwood, which is over 12,000 feet. Looking for Arctics, Alpines, Grizzled and Draco Skippers, Mead's and Scudder's

Sulphurs, Rocky Mt. Parnassians, Magdalena Alpine and Lustrous Copper requires hiking up mountain slopes, but the rewards are great when one of these special butterflies is located. The rest of us concluded that Bill, Joe and Tom Murray are closely related taxonomically to the Bighorn Sheep!

Blue River Campground looked like just an ordinary campground for fishermen, but here we had a number of species not seen elsewhere. Barbara found our only Lilac-bordered Copper, the sagebrush yielded our only Sooty Hairstreaks and Sue found our first Tawny Crescent. Hanging Lake State Park along the Colorado River was another interesting spot. We actually passed by this spot on Wednesday as it was late in the day, but when the Uncompahgre Plateau turned out to be very dry, we decided to double back and check it out. Searching along the shore of the Colorado River here in Glenwood Canyon was a very special morning. We found 30 species here, including four species of Coppers, Fritillaries, a Great Basin Wood Nymph and Colorado Hairstreak. Tom Murray found a Northern Checkerspot. Ron found a Canyonland Satyr which Bill identified while feeding Steller's Jays at the picnic area.

At Alamosa Area we encountered the desert scrub habitat where the Spalding's Blue is found. Joe found our only one – a beautiful female which was well marked so as to be distinguished from the Melissa Blue of the same area. Ron found a Hoary Comma and Ron & Sue found the only Edwards' Skipperling. The less said about the Rattlesnake that Tom Prince spotted and Tom Murray handled the better. Your reporter observed the snake from the confines of a locked car at a distance that was too close for comfort (about 100 yards).

Butterflying with friends and members of the Massachusetts Butterfly Club is always a pleasure. This trip was a lot of fun mixed in with the challenge of much physical exertion and the application of identification skills in the field.

	B	C	D	E	F	G	H	I	J	K	L	M
Rocky Mt Parnassian		x		x			x					x
Black Swallowtail	x				x	x					x	
Western Tiger Swallowtail	x	x				x		x	x	x	x	
Two-tailed Swallowtail	x	x		x	x	x				x		
Pale Swallowtail	x	x				x			x	x		
Checkered White	x	x	x		x	x		x	x	x	x	
Western White				x					x	x		
Cabbage White	x	x		x	x	x			x	x	x	
Large Marble		x										
Clouded Sulphur		x			x	x				x	x	
Orange Sulphur	x	x		x	x				x		x	
Queen Alexandra's Sulphur		x		x				x		x		
Mead's Sulphur							x					x
Scudder's Sulphur												x
Mexican Yellow					x							
Dainty Sulphur				x			x		x		x	
Tailed Copper										x	x	
Lustrous Copper							x					
Gray Copper	x											
Ruddy Copper				x						x		
Blue Copper						x		x	x		x	
Purplish Copper										x		
Lilac-bordered Copper								x				
Colorado Hairstreak									x	x		
Coral Hairstreak					x	x					x	

Behr's Hairstreak	x			x		x	x	x
Sooty Hairstreak						x		
California Hairstreak				x				
Sylvan Hairstreak							x	
Banded Hairstreak			x					
Striped Hairstreak	x	x	x	x				x
Hedgerow Hairstreak				x				
Bramble Hairstreak - Canyon		x						x x
Juniper Hairstreak - Siva							x	x
Gray Hairstreak	x	x		x	x			
Western Pygmy-Blue							x	
Marine Blue				x			x	
Reakirt's Blue		x	x	x				
Western Tailed-Blue				x				
Hops Azure	x	x						
Western Square-spotted Blue				x				x
Rocky Mt Dotted Blue	x	x	x			x		
Spalding's Blue								x
Silvery Blue	x							x
Melissa Blue			x				x	x
Greenish Blue				x	x			x
Boisduval's Blue		x		x		x	x	x
Shasta Blue								x
Acmon Blue			x	x	x		x	
Arctic Blue								x x
Nais Metalmark				x				
Variiegated Fritillary	x	x		x	x		x	x x x
Great Spangled Fritillary								x
Aphrodite Fritillary	x	x	x	x				
Edwards' Fritillary		x	x		x			
Coronis Fritillary			x	x				
Zerene Fritillary								x
Callippe Fritillary		x	x		x	x		

Great Basin Fritillary													X	
Altantis Fritillary	X	X	X	X		X								X
Hesperis Fritillary	X	X	X	X		X								X
Purplish Fritillary							X							X
Arachne Checkerspot	X	X	X			X								
Northern Checkerspot													X	
Pearl Crescent		X				X								
Northern Crescent				X										X
Tawny Crescent	X							X						
Field Crescent	X	X	X	X	X	X								
Variable Checkerspot		X												
Hoary Comma	X	X												X
Mourning Cloak	X	X								X	X			
Milbert's Tortoiseshell		X												
American Lady													X	
Painted Lady	X	X	X	X		X	X		X	X	X	X	X	X
West Coast Lady							X							X
Red Admiral	X	X		X	X	X								
Viceroy											X			
Weidemeyer's Admiral	X	X		X		X			X	X	X			
Hackberry Emperor	X	X			X									
Canyonland Satyr												X	X	
Common Ringlet - Ochre		X	X	X		X		X		X	X	X		
Common Wood-Nymph	X	X			X	X			X	X				
Great Basin Wood- Nymph										X	X	X		
Small Wood-Nymph		X		X		X			X					
Magdalena Alpine							X							
Colorado Alpine														X
Common Alpine								X						X
Chryxus Arctic														X
Queen			X											
Silver-spotted Skipper		X			X									
Northern Cloudywing					X									
Mexican Cloudywing					X									
Rocky Mt Duskywing											X			

Horace's Duskywing				x				x	
Pacuvius Duskywing			x						
Afranius Duskywing					x				
Persius Duskywing						x			
Grizzled Skipper							x		x
Common Checkered-Skipper	x	x		x	x			x	x
Common Sootywing								x	
Russet Skipperling		x	x	x					x
Garita Skipperling		x					x		
Edwards' Skipperling									x
Uncas Skipper									x
Ottoo Skipper		x			x				
Green Skipper	x								
Draco Skipper		x					x	x	
Tawny-edged Skipper		x							
Long Dash		x		x					x
Sachem		x	x						
Delaware Skipper		x							
Yuma Skipper									x
Taxiles Skipper	x	x		x	x	x		x	x
Dun Skipper	x	x		x	x				x
Common Roadside-Skipper		x							





## Book Review

*The Millennium Atlas of Butterflies in Britain and Ireland.* By Jim Asher (ed.), Martin Warren (ed.), Richard Fox (ed.), Paul Harding, Gail Jeffcoate, and Stephen Jeffcoate. New York: Oxford University Press, 2001. Hardcover, xx +433 pages. List \$72, but available for about \$55; used copies much less.

Reviewed by Dottie Case

How often through life's journey do we actively seek one thing, which remains ever elusive, only to accidentally stumble upon something equally wonderful? Perhaps searching for a Henry's Elfin turns up an unexpected Bog Elfin; or an unfound hairstreak yields a Tawny Emperor in a new location. So it was on a fabulous fall afternoon, when I wandered in fruitless search for ancestors in an ancient cemetery, then found the local library closed, but finally discovered a delightful bookstore in West Brookfield, where a volume on the "Butterfly" shelf caught my eye. It turned out to be a treasure well worthy of our attention.

From 1995 to 1999 a survey of butterflies took place in England, Wales, Scotland and Ireland, involving "many thousands" of winged and non-winged participants. (Though the northeast United States is approximately the same size as the United Kingdom, it's hard for me to imagine that we have "many thousands" of butterflyers here.) The census results are presented in this 8 x 10" book. Since this is England we're talking about, I won't refer to it as a "coffee table book;" it is rather a Tea Table Tome!

The 430 pages contain a core section of species accounts with color photographs of adults (usually top view) and caterpillars or eggs, with some habitat views, plus atlas maps of sightings by grid

location and often abundance data from earlier studies. The text is neatly divided into sections on brief descriptions, food plants, habitat, life cycle, distribution, and interpretation. There are approximately four pages per species.

A disclaimer is perhaps in order: this is NOT a field guide and would indeed be quite heavy and cumbersome to lug around in a backpack, unless one is masochistic. Also it lacks detailed identification descriptions and underside photos. Nonetheless, it would prove very useful in planning your trip. There is a color map of conservation areas and nature preserves, but no precise location listing within the sixty-two areas covered. In addition, monthly climate reports and phenograms of some species (as in our MBC checklist) are included if you wish to time your trip for maximum success. Armchair travelers wishing to learn more about world lepidoptera will also find this section engaging.

Seventy-three species are portrayed, with fifty-seven resident and sixteen rare. It might be of some consolation to those of us who are Hesperidae-challenged that on the British list there are only nine--read that again: nine!--skipper species to master! The skipper list *begins* with Chequered Skipper (*Carterocephalus palaemon*), which we call Arctic Skipper. Many common species across the pond are in fact the same as our own; one needs only to learn a different name. There is the Camberwell Beauty (Mourning Cloak), Large Heath (Common Ringlet), Small Pearl-Bordered Fritillary (Silver-bordered Fritillary), the Essex Skipper (European Skipper), and the Small White (Cabbage White).

Sandwiched around the species accounts are chapters on the Atlas Project itself. The “before” sections include the history of the project, and major types of habitat with management suggestions, illustrated with gorgeous photographs. The data collection and

recording and interpretation methods are detailed in a clear and cogent way. The “after” section gives what was learned about the patterns and causes of butterfly distribution changes, and speculation about the causes of decline in some regions and species and expansion in others. The book concludes with recommendations on the conservation of butterflies.

Checklists and encouragement are provided in the Appendix for readers who care to contribute further sightings to the database. Certainly Citizen Scientists such as members of MBC are vital in the understanding of population trends, since many of us are out observing daily. But then, we all know of those naturalists who merely see the species, check it off their lists, then depart for another rarity. We need to give something back to help ensure that these creatures we so admire will be here “ages and ages hence,” as Robert Frost put it. Contributing information and speaking up when habitats are under threat are ways we can advocate for those who can’t speak for themselves.

The Millennium Atlas dedication page reveals the spirit of this project: “Dedicated to the many recorders who made it all possible.” I reflected a number of times while perusing this book on the lack of such data available from our own Massachusetts Butterfly Atlas project, to which numbers of enthusiastic individuals devoted many hours and miles between 1986 and 1990. Fifteen years later it is still not in print. I found it very impressive that within two years of project completion, this stunning, detailed book was published by one of the world’s premier publishers. Those Brits know how to get things done!

**North American Butterfly Association  
7th Biennial Members' Meeting**

**West Springfield, Massachusetts  
June 1-4, 2006**

Plan to join fellow NABA members from points near and far at the seventh Biennial NABA Members' Meeting, to be held June 1-4, 2006 at the Best Western Sovereign Hotel and Conference Center.

To register, go to [www.naba.org](http://www.naba.org) and either register online or download the pdf brochure. You will be sent a packet of information before the meeting giving more details including speakers, banquet, field trips, etc. along with information on how to pre-register for field trips and how to pre-order meeting pins and T-shirts.



## **Short Reports: From Wasteland to Butterfly Meadow**

Connie Muther, a Massachusetts Butterfly Club member, has been fascinated with butterflies since she was eight and someone put a caterpillar in her hand. In 2000 the former teacher, who lives in Connecticut, wrote *My Monarch Journal*, a children's book which chronicles the Monarch lifecycle, and developed a program which she presents in classrooms to teach about butterflies and moths.

Recently, Connie and a friend persuaded the owner of Shady Glen Dairy Stores in Manchester, CT to keep the field adjacent to his restaurant unmowed for a year, so she could release 300 Baltimore Checkerspot caterpillars there. Normally, the field is mowed three times a year, but this year the caterpillars were able to overwinter as they should, in a protective leaf litter, and when they emerge in the spring there will be plenty of English plantain growing for them to eat. The *Manchester Telegram & Gazette* found this effort quite interesting and published a short report about it on September 25, 2005.

Muther is hoping that the publicity generated by this effort will help her persuade other organizations which own unused land to keep it unmowed. She recommends that they mow only half of their area one year and the other half the next year, always leaving some areas uncut for caterpillars. If the field lacks plantain or milkweed, she offers to plant some. She figures that most organizations will be delighted not only by the butterflies which arrive, but by the free publicity they'll get when the local newspaper writes a nice article about them.



Maria Sibylla Merian  
Engraving from *Erucarum Ortus*, 1679-1717

## **Submission of Articles, Illustrations, and Season Records**

We encourage all members to contribute to *Massachusetts Butterflies*. Articles, illustrations, butterfly field trip reports, garden reports, and book reviews are all welcome, and should be sent to the Editor by September 15 for the Fall issue, and January 15 for the Spring issue.

Send Fourth of July count results to Erik Nielsen by August 1 for inclusion in the Fall issue, and your season sightings and records to Erik by December 31 for inclusion in the Spring issue. Records may now be submitted via the online checklist and reporting form, which is available for download from <http://www.massbutterflies.org/club-publications.asp> or from <http://www.massbutterflies.org/downloads/massbutterflies.xls>

## **Massachusetts Butterflies Advisory Board**

Brian Cassie, Foxboro, MA  
Madeline Champagne, Foxboro, MA  
Mark Fairbrother, Montague, MA  
Richard Hildreth, Holliston, MA  
Carl Kamp, Royalston, MA  
Matt Pelikan, Oak Bluffs, MA

**Massachusetts Butterfly Club  
108 Walden Street  
Cambridge, MA 02140-3330**